



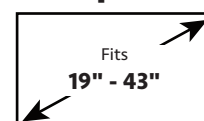
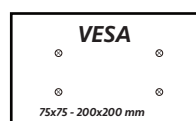
The ERMMS3-01B is a single stud full motion mount that fits most 19" to 43" TVs up to 45 lbs. Enhanced movement provides up to 15-degree tilt and 60-degree swivel for the best viewing angle. This mount can extend up to 17" and has a profile of 2.9". Level adjustment allows the TV to be properly leveled after installation due to its 360-degree rotation. Safety tested and UL certified. Integrated cable management helps to conceal unsightly power and HDMI cables.

Features

- Fits most 19" to 43" TVs up to 45 lbs.
- Enhanced movement provides up to 15-degree tilt and 60-degree swivel for the best viewing angle.
- It extends up to 17" and has a profile of 2.9".
- Level adjustment allows the TV to be properly leveled after installation due to its 360-degree rotation.
- Integrated cable management helps to conceal unsightly power and HDMI cables.



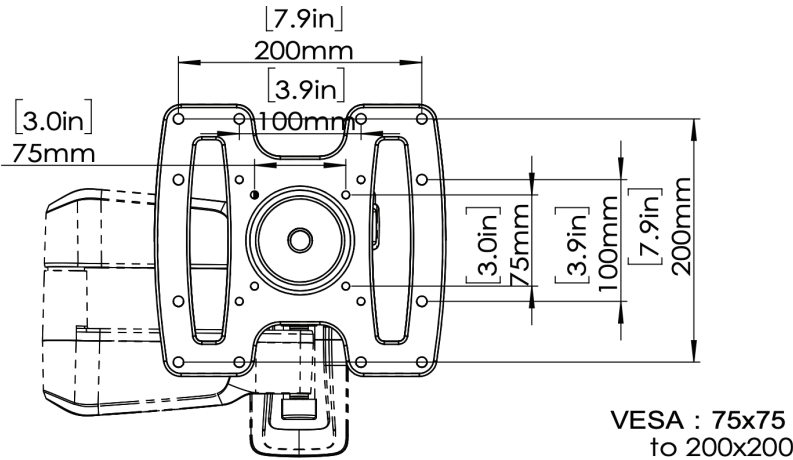
TV Compatibility



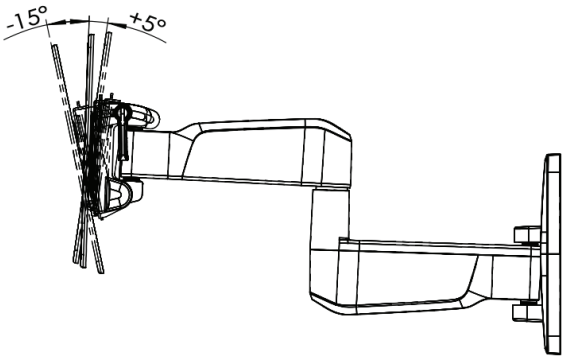
WARRANTY: 5-Year

Product Specifications	DIMENSIONS (W x H x D)	PRODUCT WEIGHT	LOAD CAPACITY	FINISH	AVAILABLE COLORS
	13.1" x 11.4" 2.9"	5.39lbs.	45lbs.	Powder Coating	Black
	332mm x 289mm x 73mm	2.44 KG	20 kg		

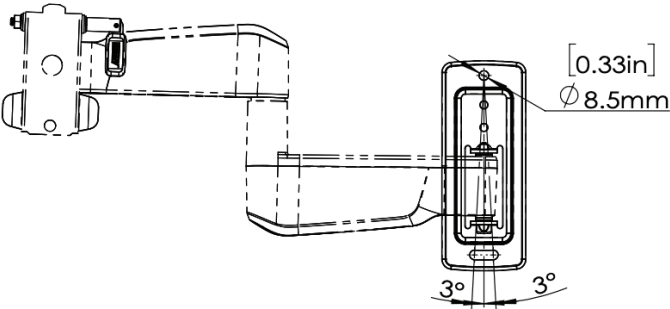
Product Dimensions



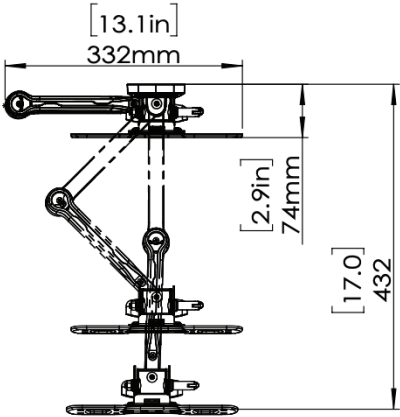
TV INTERFACE



SIDE VIEW - TILTING



WALL PLATE



TOP VIEW