



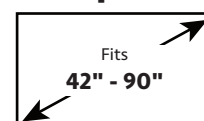
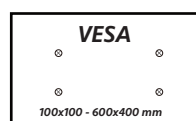
The ERMML6-01B full motion mount fits most 42" to 90" TVs up to 132 lbs. Enhanced movement provides up to a 15-degree tilt and a 45-degree swivel for the best viewing angle. This mount can extend up to 24" and has a profile of 3". Level adjustment allows the TV to be properly leveled after installation. Horizontal shift allows the TV to be moved horizontally on the wall plate to allow optimal placement on the wall. Safety tested and UL certified. Integrated cable management helps to conceal unsightly power and HDMI cables.

Features

- Fits most 42" to 90" TVs up to 132 lbs.
- Enhanced movement provides up to a 15-degree tilt and a 45-degree swivel.
- It extends up to 24" and has a profile of 3".
- Level adjustment allows the TV to be properly leveled after installation.
- Horizontal shift allows the TV to be moved horizontally on the wall plate to allow optimal placement



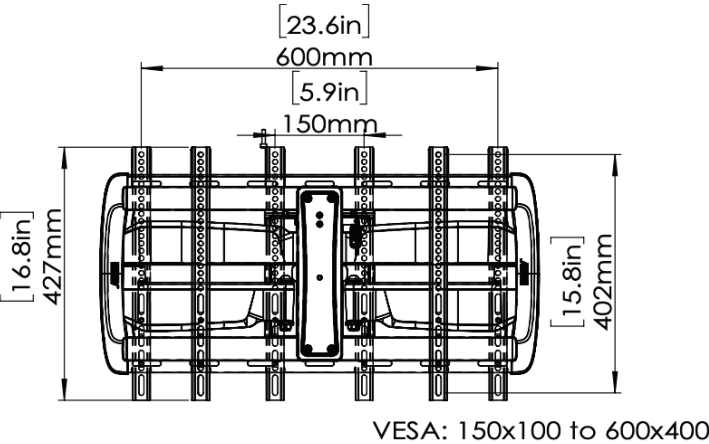
TV Compatibility



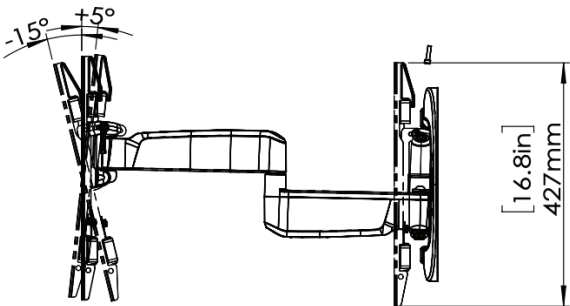
WARRANTY: 5-Year

Product Specifications	DIMENSIONS (W x H x D)	PRODUCT WEIGHT	LOAD CAPACITY	FINISH	AVAILABLE COLORS
	29.1" x 16.8" 3.0"	22.26lbs.	132lbs.	Powder Coating	Black
	739mm x 426mm x 76mm	10 KG	60 kg		

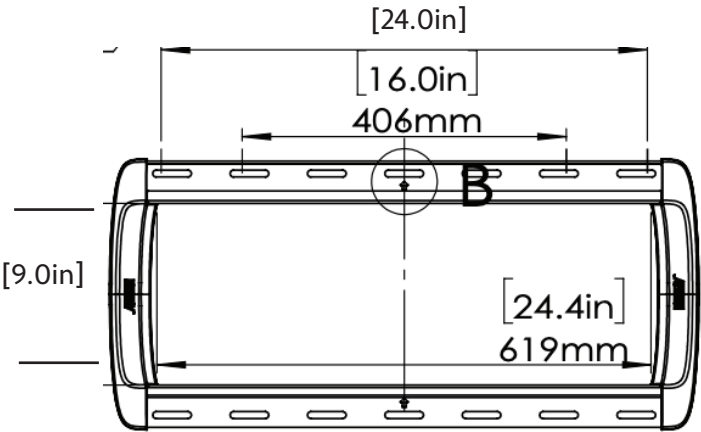
Product Dimensions



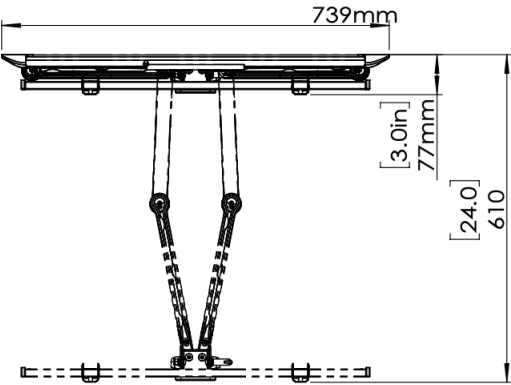
TV INTERFACE



SIDE VIEW - TILTING



WALL PLATE



TOP VIEW