

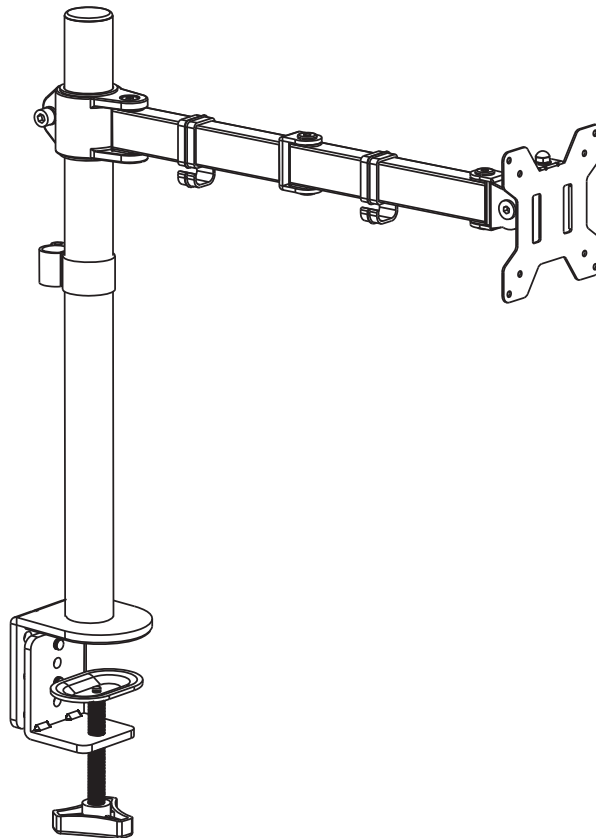


Single Monitor Desk Mount with Articulating Arms Instruction Manual (A)

English pages 02–09

French pages 10–17

Spanish pages 18–25



Model: ERDAM2-01B

Thank You for Choosing this ErgoAV Product!

At ErgoAV, we want to add value to your AV experience by providing the highest quality products and services in the industry. If you have any concerns or comments, please contact us.

ErgoAV Customer Care

phone (877) 419-7832

email: support@ergoav.com

website: www.ergoav.com

address: 9501 Louisiana Ave N, #200, Brooklyn Park, MN 55445

IMPORTANT SAFETY INFORMATION

• Please carefully read all instructions before attempting installation. If you do not understand the instructions or have any concerns or questions, please contact Technical Support at (877) 419-7832 or Customer Service at support@ergoav.com.

⚠ CAUTION: Avoid potential personal injuries and property damage!

- Do not use this product for any purpose that is not explicitly specified in this manual. Do not exceed weight capacity. We are not liable for damage or injury caused by improper mounting, incorrect assembly or inappropriate use.
- Do Not use this product on desks made of particle board or other soft woods.
- The information contained in this manual does not cover all possible conditions or variables in relation to the installation of this product.

Weight Restrictions



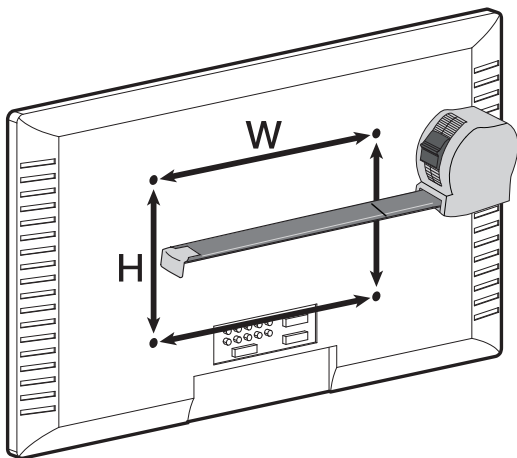
If your monitor weighs more, this mount is NOT compatible. Monitor should not exceed maximum listed weight.

⚠ WARNING

DO NOT exceed the maximum weight indicated. This mounting system is intended for use only within the weight range listed. Use with products heavier than the maximum weight limit may result in failure of the mount, causing potential damage and or injury.

It is the responsibility of the installer to verify the total weight of the monitors and any accessories attached. Do Not exceed the weight limit listed.

Check the VESA Pattern of Your Monitor before the Installation



75mm ≈ 3"
100mm ≈ 4"

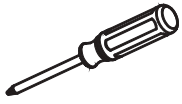
Measure Your Monitor VESA Pattern:

Minimum: 75mm × 75mm / 3" × 3" (W × H)

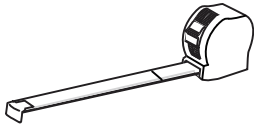
Maximum: 100mm × 100mm / 4" × 4" (W × H)

If your Monitor's VESA Pattern is smaller than 75mm x 75mm or greater than 100mm x 100mm, this mount is NOT COMPATIBLE with your Monitor. Please contact our Technical Support at (877) 419-7832 or support@ergoav.com to find a compatible mount.

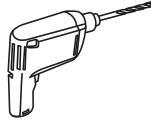
Tools Needed (Not Included)



Phillips Screwdriver



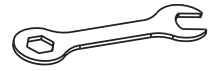
Tape Measure



Drill (Optional)



15/32" – 3/4" (12mm – 20mm)
Wood Drill Bit (Optional)



10mm wrench

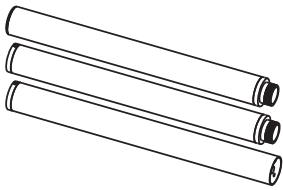
Supplied Parts and Hardware

⚠ WARNING: This product contains small items that could be a choking hazard if swallowed.

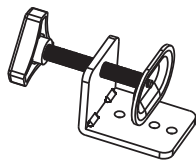
Before starting assembly, verify all parts are included and undamaged. Do Not use damaged or defective parts. If you need replacement parts, please contact Tech Support at (877) 419-7832 or Customer Service at support@ergoav.com.

• **NOTE:** Not all hardware included in this package will be used.

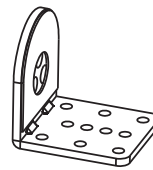
Supplied Parts and Hardware for Step 1



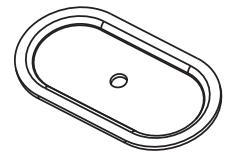
Support Pillar
01 x 1



"C" Clamp
02 x 1



"C" Clamp Brace
03 x 1



Support Plate
04 x 1



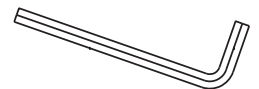
Grommet Base
05 x 1



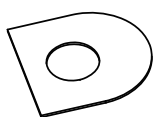
Extra Small Allen Key
5/64" (2mm)
06 x 1



Small Allen Key
1/8" (3mm)
07 x 1



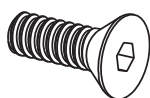
Medium Allen Key
3/16" (5mm)
08 x 1



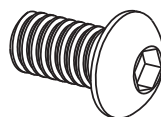
Soft Pad
09 x 1



Soft Pad
10 x 1



M5x14 Bolt
A x 3



M8x12 Bolt
B x 2

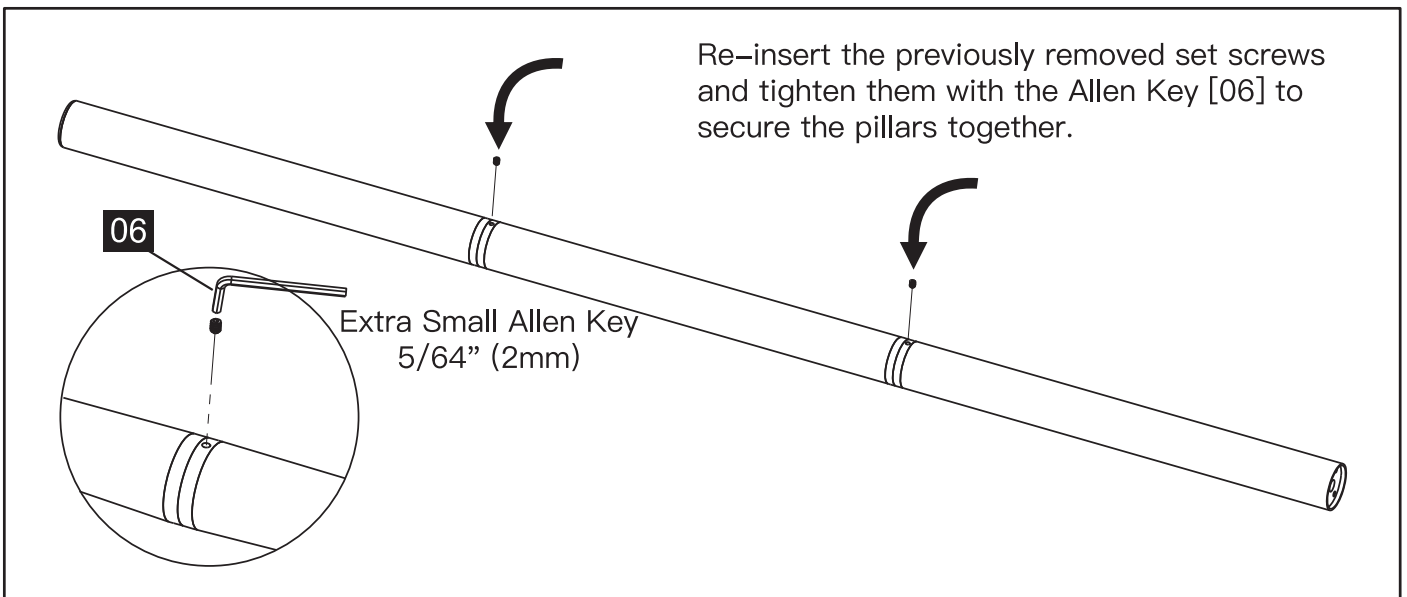
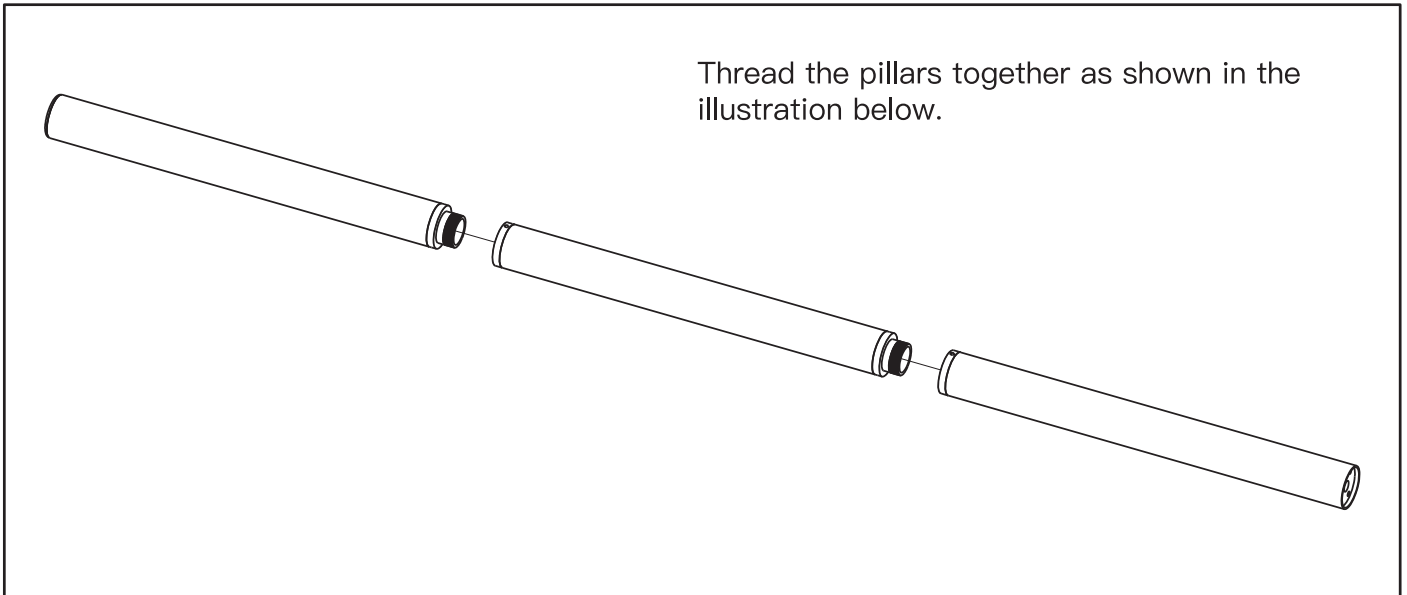
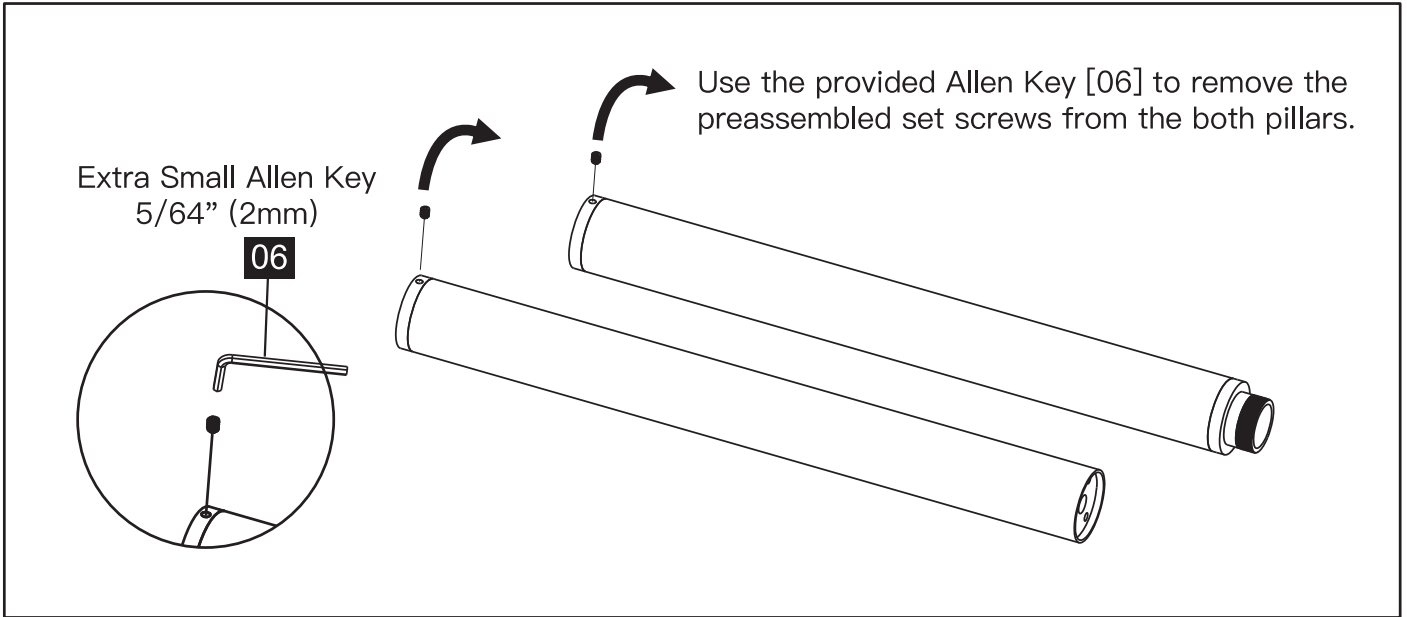


M10 Washer
C x 1



Spring Washer
D x 1

Support Pillar Assembly



Step1 Support Pillar Installation

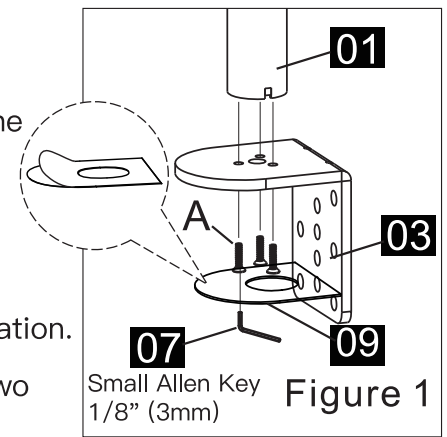
Option A: C-Clamp Installation

1. Align the holes from the C-Clamp Brace [03] with the holes on the Support Pillar Assembly [01] and secure them using the three M5 x 14 Bolts [A] and Allen Key [07]. Then adhere the Soft Pad [09] to the underside of the C-Clamp. See Figure 1.

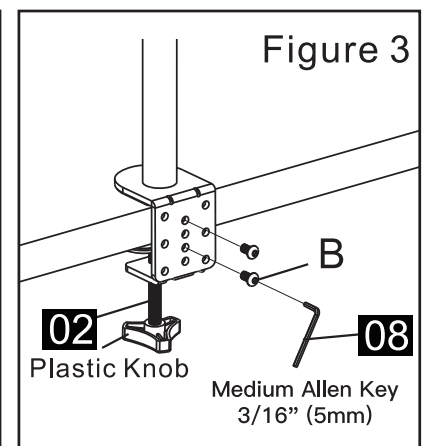
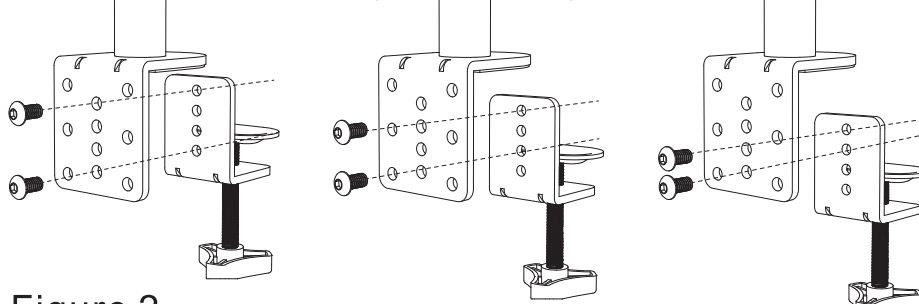
NOTE: C-Clamp installation will support between 3/4" – 3 1/2" (20mm – 90mm) desk thickness. See Figure 2 for correct configuration.

2. Attach the C-Clamp [02] to the C-Clamp Brace [03] using the two M8 x 12 Bolts [B] and Allen Key [08]. See Figure 2.

3. Rotate the plastic knob to firmly secure the C-Clamp [02] to the desk.



- ① For Desk Thickness: 3/4" – 2 3/8" (20mm – 60mm)
- ② For Desk Thickness: 1 3/8" – 3" (35mm – 75mm)
- ③ For Desk Thickness: 2" – 3 1/2" (50mm – 90mm)



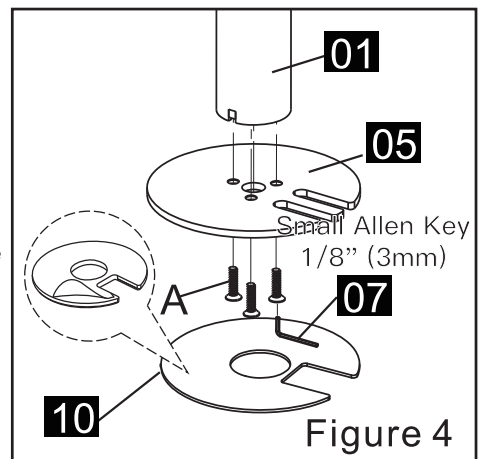
Option B: Existing Grommet Hole Installation

NOTE: If your desk has an existing grommet hole with a plastic cover, remove it before installation.

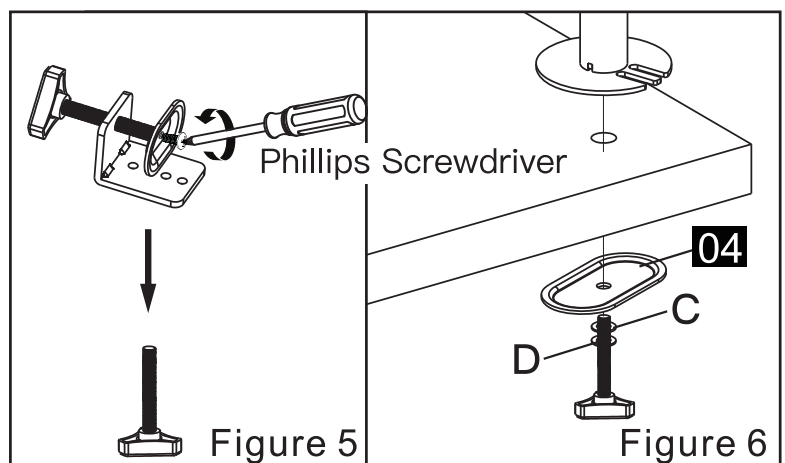
1. Align the holes from the Grommet Base [05] with the holes on the Support Pillar Assembly [01] and secure them using the three M5 x 14 Bolts [A] and Allen Key [07]. Then adhere the Soft Pad [10] to the underside of the Grommet Base [05]. See Figure 4.

2. Remove the Screw from the C-Clamp Assembly [02] using a Phillips screwdriver. Then remove the plate from threaded portion of the Knob of the C-Clamp Assembly [02]. See Figure 5.

3. Position the pole over the mounting surface and secure it using the Support Plate [04], M10 Washer [C], Spring Washer [D] and the Bolt with plastic knob attached. See Figure 6.



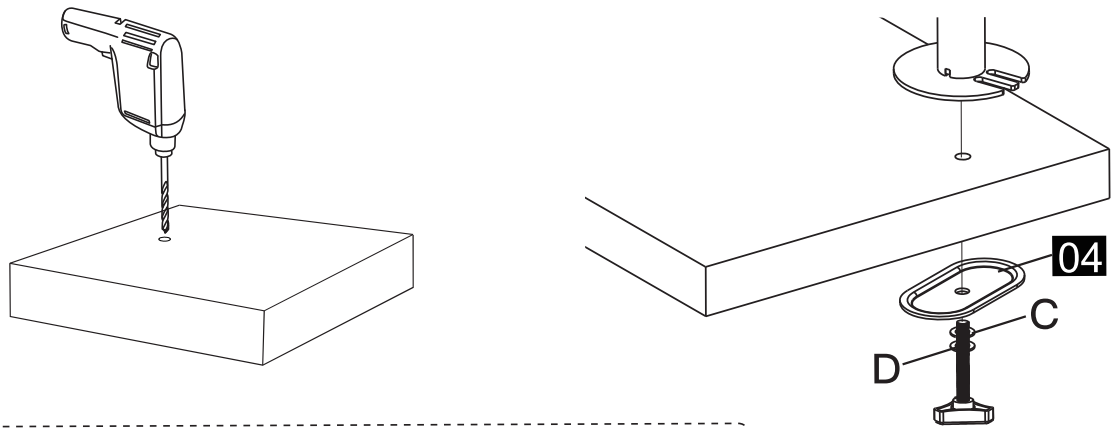
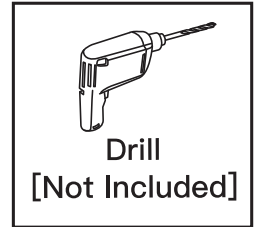
For Desk Thickness:
3/4" – 3 1/2" (20mm – 90mm)



Option C: Self-Drilled Grommet Hole Installation

1. Make a mark for the center hole on your mounting surface. Use a minimum of 15/32" (12mm) and a maximum of 3/4" (20mm) drill bit and drill a hole in the mounting surface. See Figure 7.

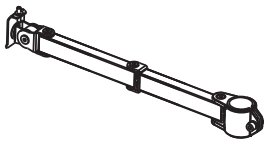
2. Step back to Option B and follow the steps.



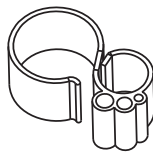
For Desk Thickness: 3/4" – 3 1/2" (20mm – 90mm)

Figure 7

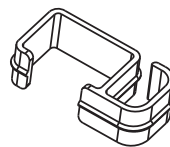
Supplied Parts and Hardware for Step 2



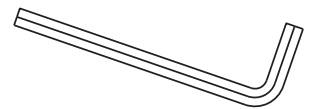
Swivel Arm
11 x 1



Cable Clip
12 x 3

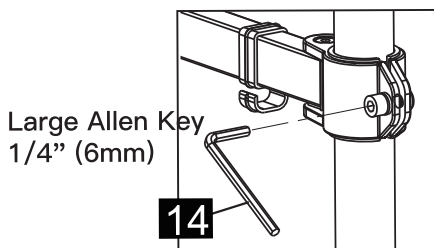


Cable Clip
13 x 2



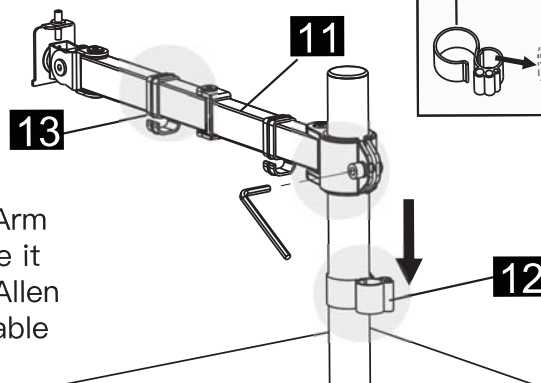
Large Allen Key
1/4" (6mm)
14 x 1

Step 2 Attach the Swivel Arm [09] to the Pillar Assembly

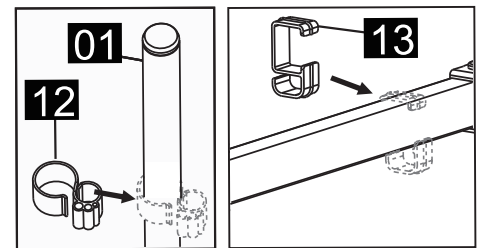


Large Allen Key
1/4" (6mm)

14



Slide the Cable Clip [12] onto the Pillar Assembly and then position the Swivel Arm [11] onto the Pillar Assembly and secure it with the pre-assembled Bolt using the Allen Key [14] as shown below. Attach the Cable Clips [13] to the Swivel Arm [11].



01

12

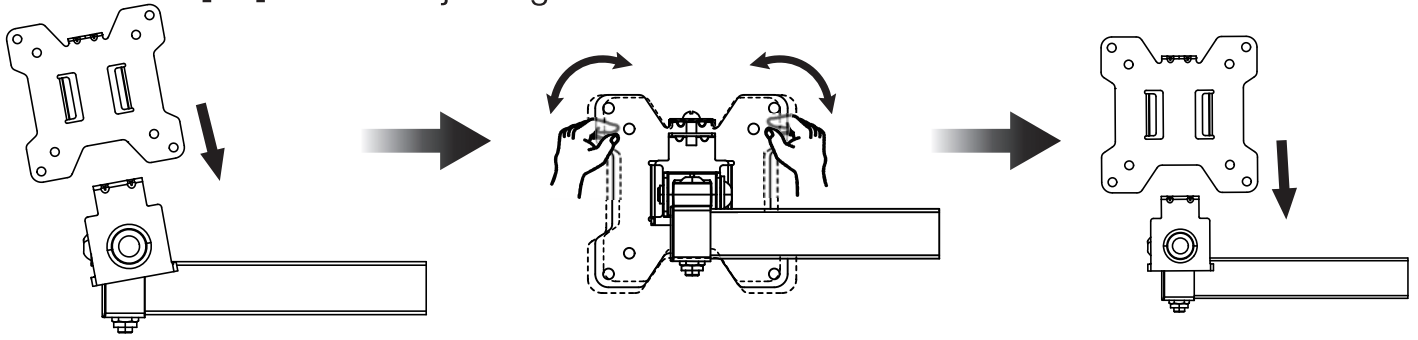
13

11

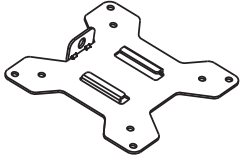
13

12

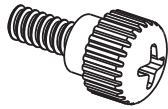
Before starting Step 3, make sure the head of the Swivel Arm [11] is vertical by sliding Monitor Plate [15] on and adjusting until vertical.



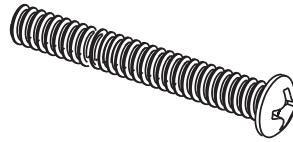
Supplied Parts and Hardware for Step 3



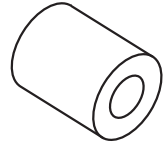
Monitor Plate
15 x 1



M4 x 12 Thumb Bolt
E x 4



M4 x 30 Bolt
F x 4

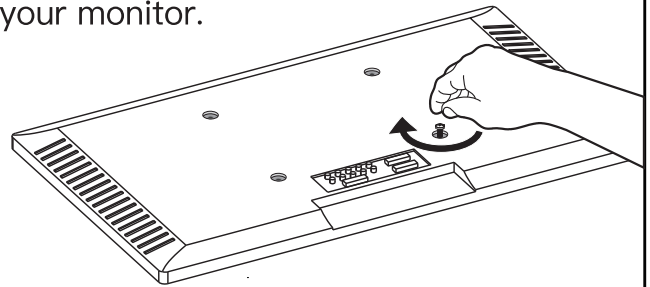
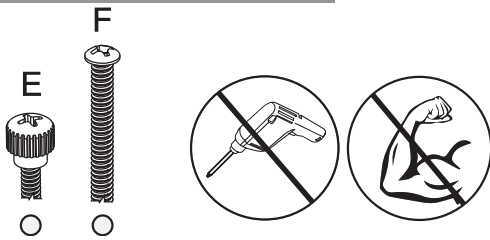


M4 Spacer
G x 4

Step 3 Attach the Monitor Plate

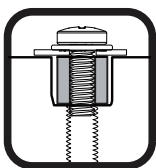
Select Monitor Bolts

Only one size bolt fits your monitor.

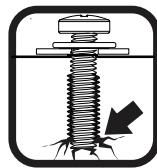


Bolt length: Verify adequate thread engagement with bolts or bolts / spacers combination. We recommend thread engagement of at least 5 turns.

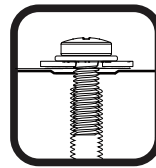
- Too short will not hold the monitor.
- Too long will damage the monitor.



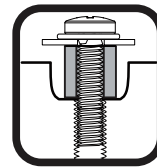
Too Short



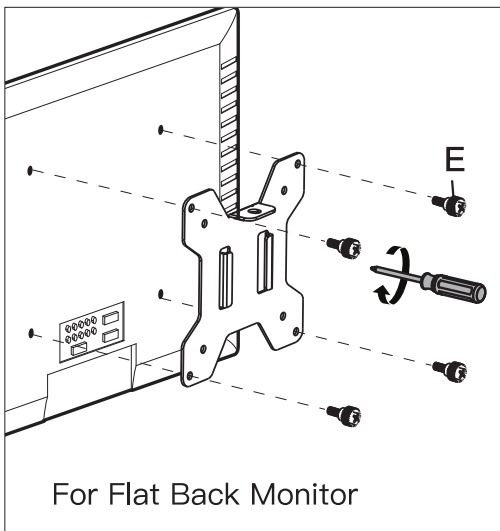
Too Long



Correct

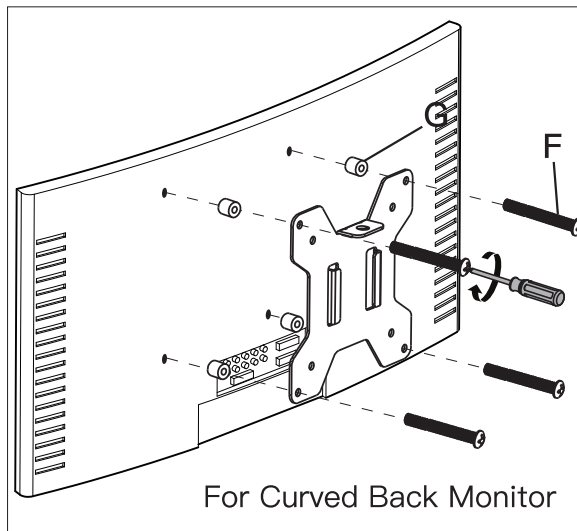


Correct

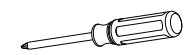


For Flat Back Monitor

Or

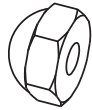


For Curved Back Monitor



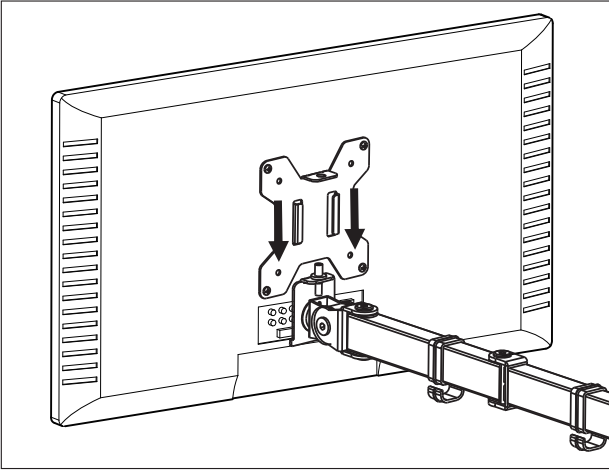
Phillips
Screwdriver
[Not Included]

Supplied Hardware for Step 4

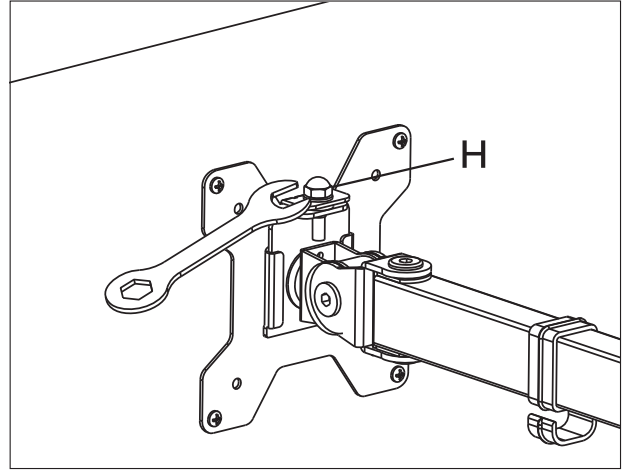


Security Nut
H x 1

Step 4 Attach the Monitor to the Head of the Swivel Arm



Slide the monitor onto the head of Swivel Arm [11] as shown in the above diagram.



Install the Security Nut [H] with wrench. Make sure the Security Nut [H] is installed before you rotate the monitor.



HEAVY! You may need assistance with this step.



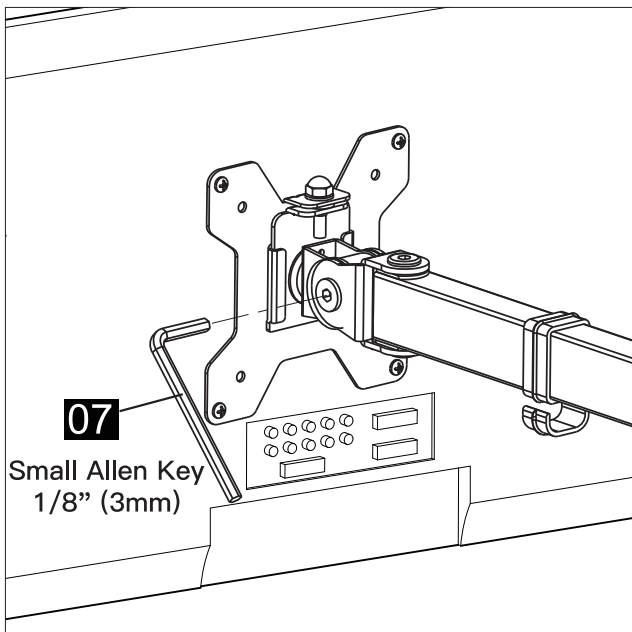
10mm wrench
[Not Included]

Supplied Hardware for Step 5

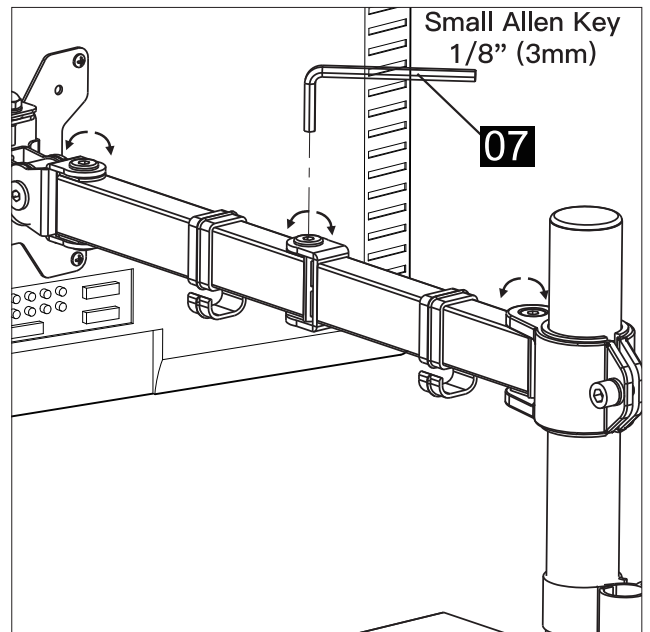


Small Allen Key
1/8" (3mm)
07 x 1

Step 5 Monitor Tilt and Swivel Adjustments

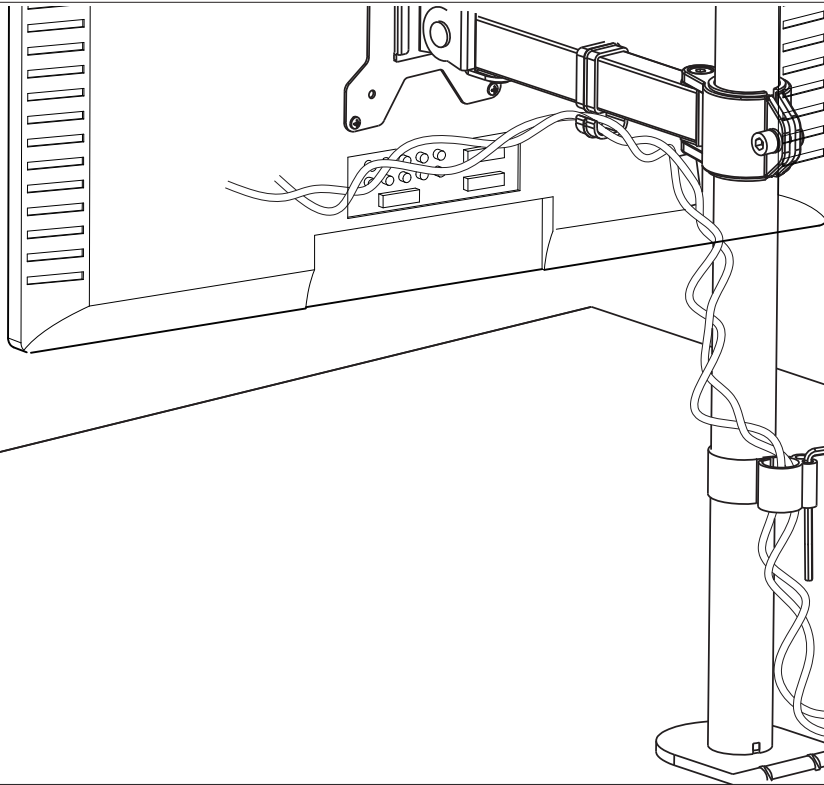


Loosen the Bolt, adjust the monitor to desired angle and tighten the Bolt with the Allen Key [07].



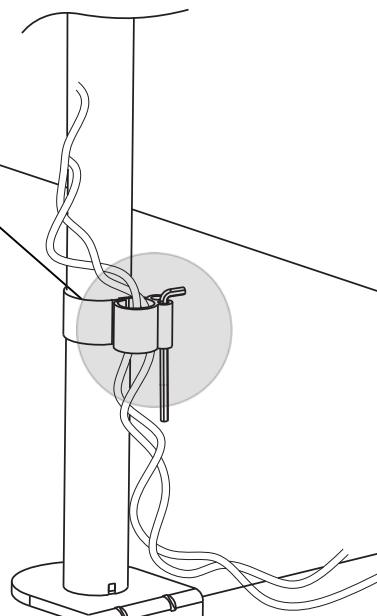
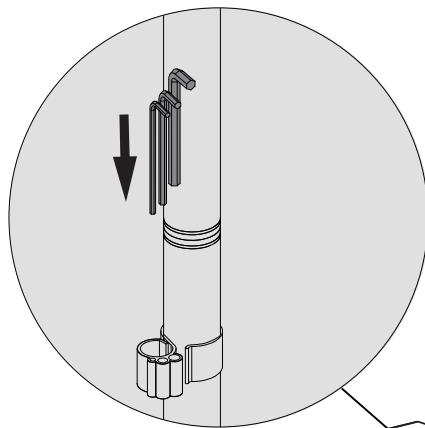
Loosen the Bolts, adjust the Swivel Arm [11] to desired position and tighten Bolt with Allen Key [07].

Step 6 Cable Management



Route cables through the Cable Clips [12] and [13] as shown below.

Step 7 Store the Allen Keys



CONSIGNES DE SECURITE IMPORTANTES

• Veuillez lire attentivement toutes les instructions avant de tenter l'installation. Si les instructions ne vous semblent pas claires ou si vous avez des questions, veuillez contacter notre service d'assistance technique au (877) 419-7832 ou notre service clientèle à l'adresse support@ergoav.com.

⚠ ATTENTION : Évitez risques de blessures et de dommages matériels!

- N'utilisez pas ce produit à des fins qui ne sont pas explicitement spécifiées dans ce manuel. Ne dépassez pas la capacité de charge. Nous ne sommes pas responsables des dommages ou blessures causés par un montage incorrect, un assemblage incorrect ou une utilisation inappropriée.
- N'utilisez pas ce produit sur des bureaux en panneaux de particules ou autres bois mous.
- Les informations contenues dans ce manuel ne couvrent pas toutes les conditions ou variables possibles en relation avec l'installation de ce produit.

Restrictions de poids



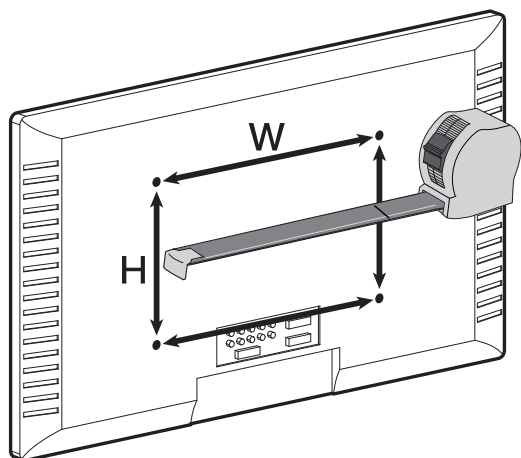
Si votre moniteur pèse plus lourd, ce support n'est PAS compatible. Le moniteur ne doit pas dépasser le poids maximal indiqué.

⚠ AVERTISSEMENT

NE PAS dépasser le poids maximum indiqué. Ce système de montage est destiné à être utilisé uniquement dans les limites des poids maximaux indiqués. L'utilisation de produits plus lourds que les poids maximaux indiqués peut entraîner une défaillance du support et de ses accessoires, causant des dommages et/ou des blessures.

Il est de la responsabilité de l'installateur de vérifier le poids total des moniteurs et de tout accessoire attaché. Ne pas dépasser la limite de poids indiquée.

Vérifiez le motif VESA de votre moniteur avant l'installation



75mm ≈ 3 po
100mm ≈ 4 po

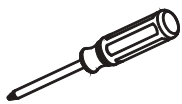
Mesurez le motif VESA de votre moniteur:

Minimum : 75mm x 75mm / 3 po x 3 po (L x H)

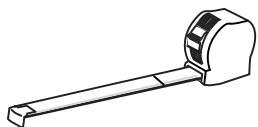
Maximum : 100mm x 100mm / 4 po x 4 po (L x H)

Si le motif VESA de votre moniteur est inférieur à 75 mm x 75 mm ou supérieur à 100 mm x 100 mm, ce support n'est PAS COMPATIBLE avec votre moniteur. Veuillez contacter notre support technique au (877) 419-7832 ou support@ergoav.com pour trouver un support compatible.

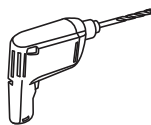
Outils nécessaires (non inclus)



tournevis Phillips



Mètre ruban



Foreuse
(en option)



Foret à bois
15/32 po – 3/4 po
(12mm – 20mm)
(en option)



3/8 po (10mm) Clé

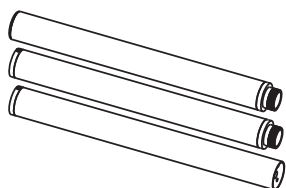
Pièces et matériel fournis

⚠ AVERTISSEMENT : Ce produit contient des petits objets susceptibles de présenter un risque d'étouffement en cas d'ingestion.

Avant de commencer l'assemblage, vérifiez que toutes les pièces sont incluses et en bon état. N'utilisez pas de pièces endommagées ou défectueuses. Si vous avez besoin de pièces de rechange, veuillez contacter notre ligne d'assistance technique au (877) 419-7832 ou notre service clientèle à l'adresse support@ergoav.com.

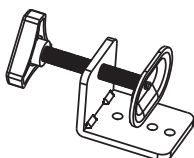
• Noter : le matériel inclus dans cet ensemble ne sera pas utilisé en totalité.

Pièces et matériel fournis pour l'étape 1



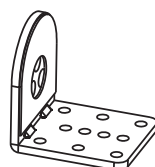
Pilier support

01 x 1



Pince de serrage en C

02 x 1



Support de pince de serrage en C

03 x 1



Plaque de support

04 x 1



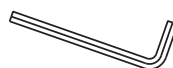
Base de l'œillet

05 x 1



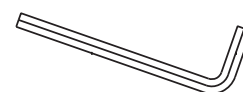
Clé Allen extra petite
5/64 po (2mm)

06 x 1



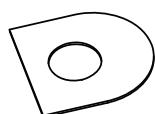
Petite clé Allen
1/8 po (3mm)

07 x 1



Clé Allen moyenne
3/16 po (5mm)

08 x 1



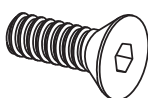
Coussinet souple

09 x 1

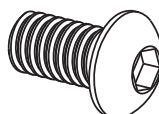


Coussinet souple

10 x 1



M5 x 14 Boulon
A x 3



M8 x 12 Boulon
B x 2



M10 des rondelles
C x 1

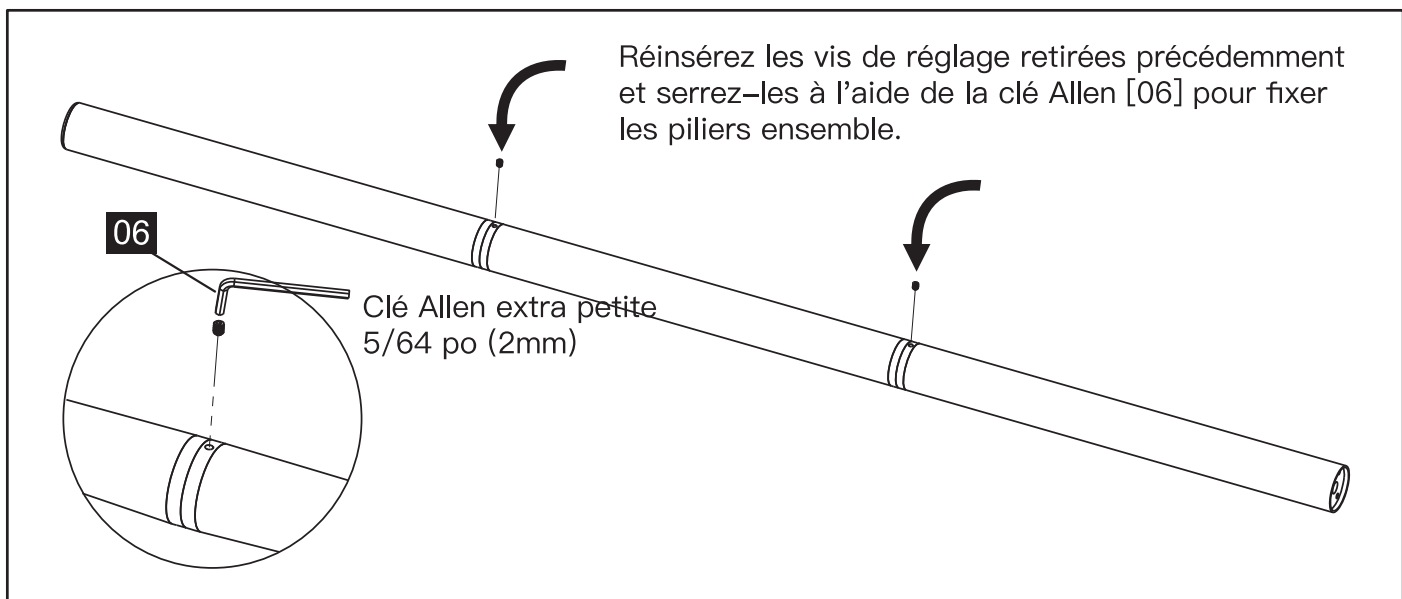
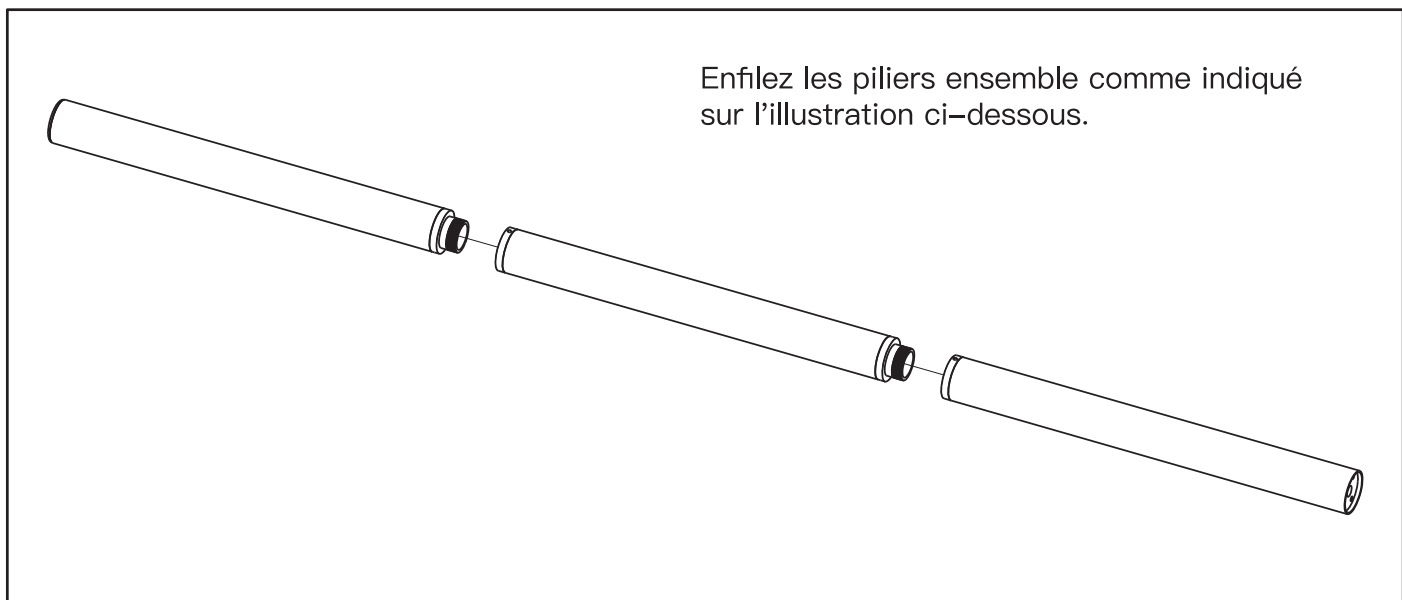
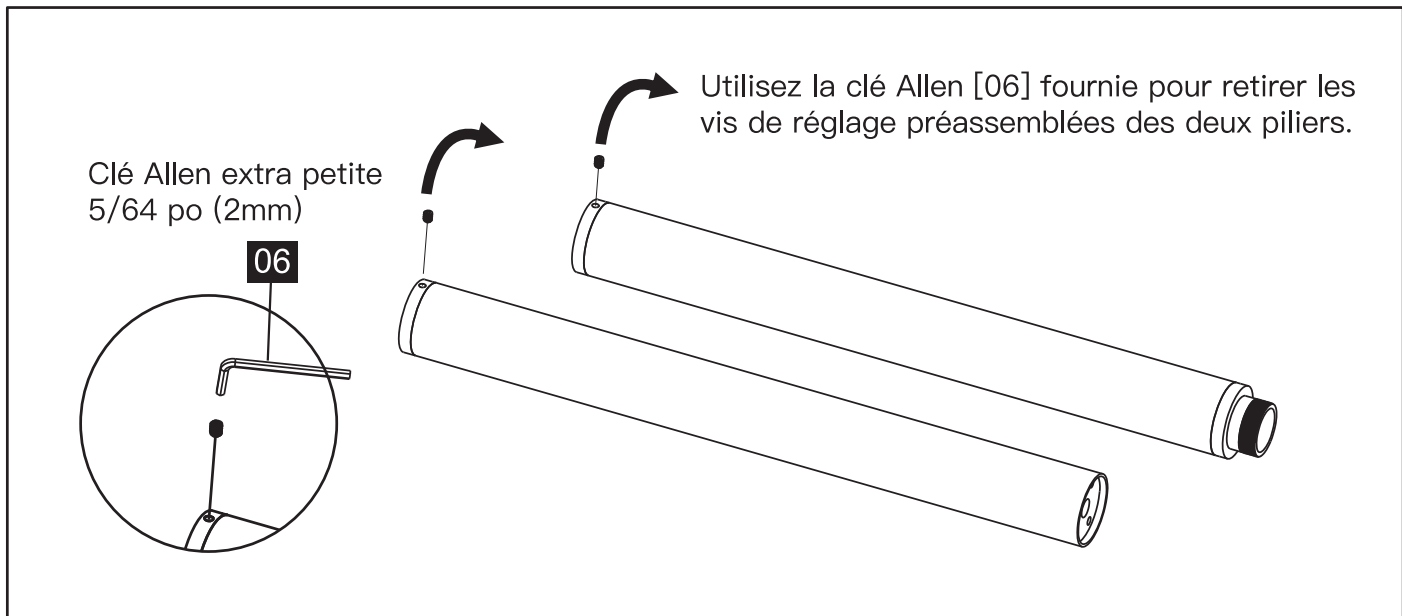
C x 1



Rondelle élastique
D x 1

D x 1

Assemblage des piliers support



Étape 1 Installation du pilier support

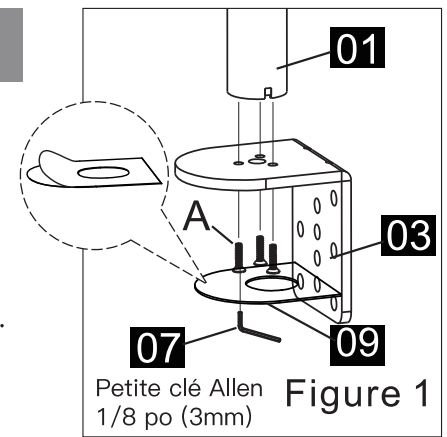
Option A : Installation du pince de serrage en C

1. Alignez les trous du support de pince de serrage en C [03] avec les trous de l'ensemble de pilier support [01] et fixez-les à l'aide des trois boulons M5 x 14 [A] et de la clé Allen [07]. Collez ensuite le coussin souple [09] sur la face inférieure de la pince de serrage en C. Voir la figure 1.

REMARQUE : L'installation de la pince de serrage en C permet de supporter une épaisseur de bureau comprise entre 3/4 et 3 1/2 pouces. Voir la figure 2 pour une configuration correcte.

2. Fixer le pince de serrage en C [02] au support de pince de serrage en C [03] à l'aide des deux boulons M8 x 12 [B] et de la clé Allen [08]. Voir la figure 2.

3. Tournez le poignées en plastique pour fixer fermement la pince de serrage en C [02] au bureau.



❶ Pour l'épaisseur du bureau : 3/4 po – 2 3/8 po (20mm à 60mm)

❷ Pour l'épaisseur du bureau : 1 3/8 po – 3 po (35mm à 75mm)

❸ Pour l'épaisseur du bureau : 2 po – 3 1/2 po (50mm à 90mm)

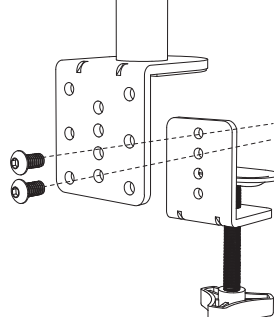
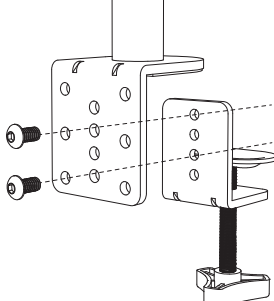
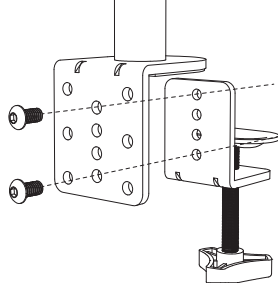
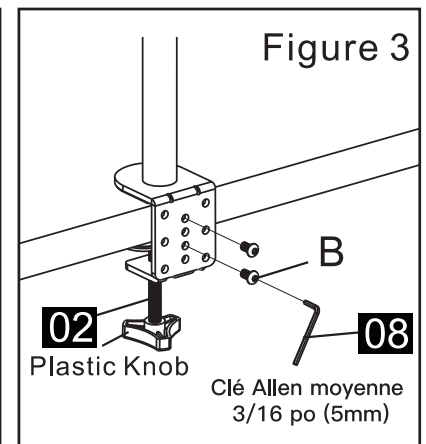


Figure 2



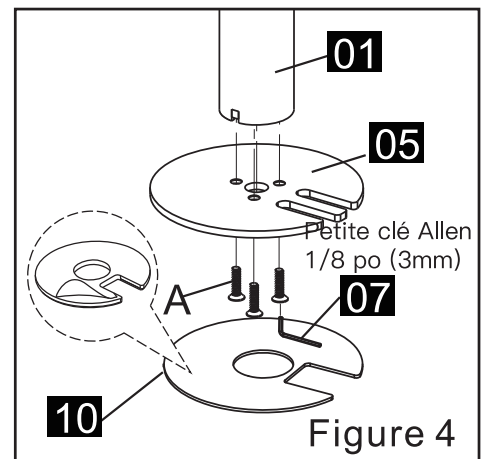
Option B : Installation des passe-fils

NOTE : Si votre bureau est doté d'un trou d'œillet existant avec un couvercle en plastique, retirez-le avant l'installation.

1. Alignez les trous de la base de l'œillet [05] avec les trous de l'ensemble de pilier support [01] et fixez-les à l'aide des trois boulons M5 x 14 [A] et de la clé Allen [07]. Collez ensuite le coussin souple [10] sur la face inférieure de la base de l'œillet [05]. Voir la figure 4.

2. Retirez la vis de l'ensemble de pince de serrage en C [02] à l'aide d'un tournevis cruciforme. Retirez ensuite la plaque de la partie filetée du poignées de l'ensemble de pince de serrage en C [02]. Voir la figure 5.

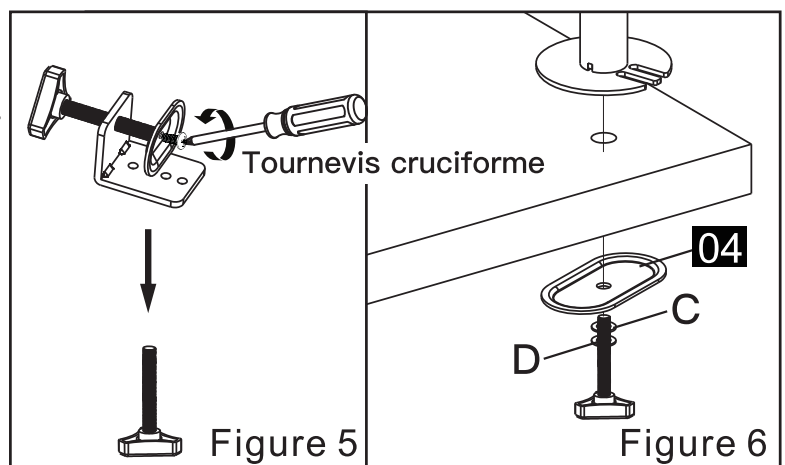
3. Positionnez le poteau sur la surface de montage et fixez-le à l'aide de la plaque de support [04], de la rondelle M10 [C], de la rondelle ressort [D] et du boulon avec le poignées en plastique attaché. Voir la figure 6.



Pour l'épaisseur du bureau :
3/4 po – 3 1/2 po (20mm à 90mm)



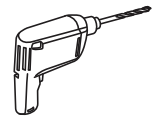
Tournevis
cruciforme
[non inclus]



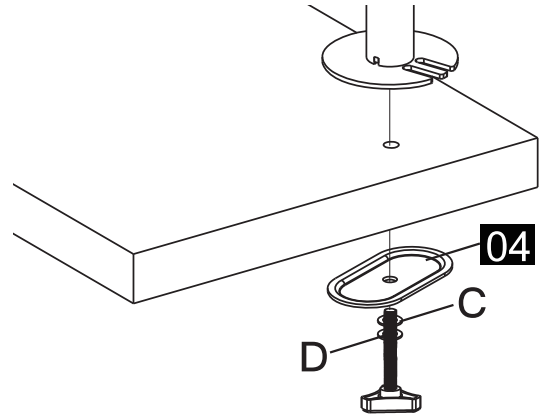
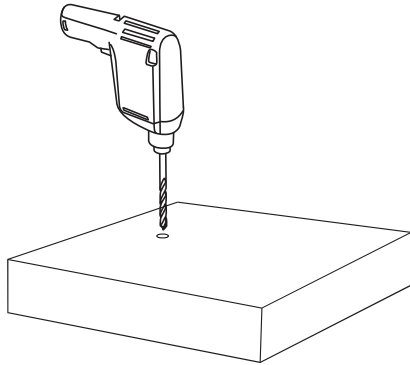
Option C: Installation du trou d'oeillet auto-percé

1. Faites une marque pour le trou central sur votre surface de montage. Utilisez une mèche de 15/32 po (12mm) minimum et de 3/4 po (20mm) maximum et percez un trou dans la surface de montage. Voir la figure 7.

2. Revenez à l'option B et suivez les étapes.



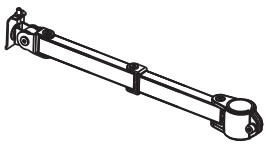
Perceuse
[non incluse]



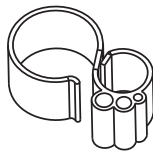
Pour l'épaisseur du bureau : 3/4 po – 3 1/2 po (20mm à 90mm)

Figure 7

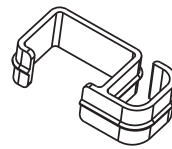
Pièces et matériel fournis pour l'étape 2



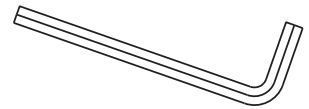
Bras pivotant
11 x 1



Pince à câble
12 x 3



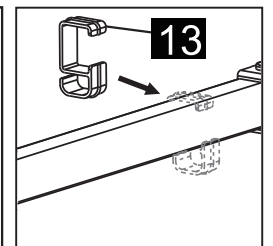
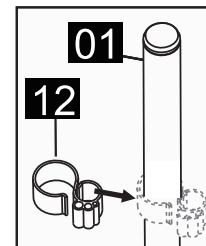
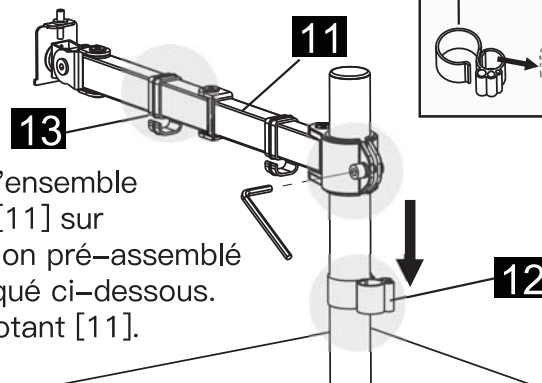
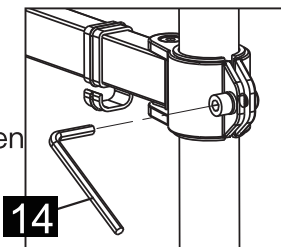
Pince à câble
13 x 2



Grande clé Allen
1/4 po (6mm)
14 x 1

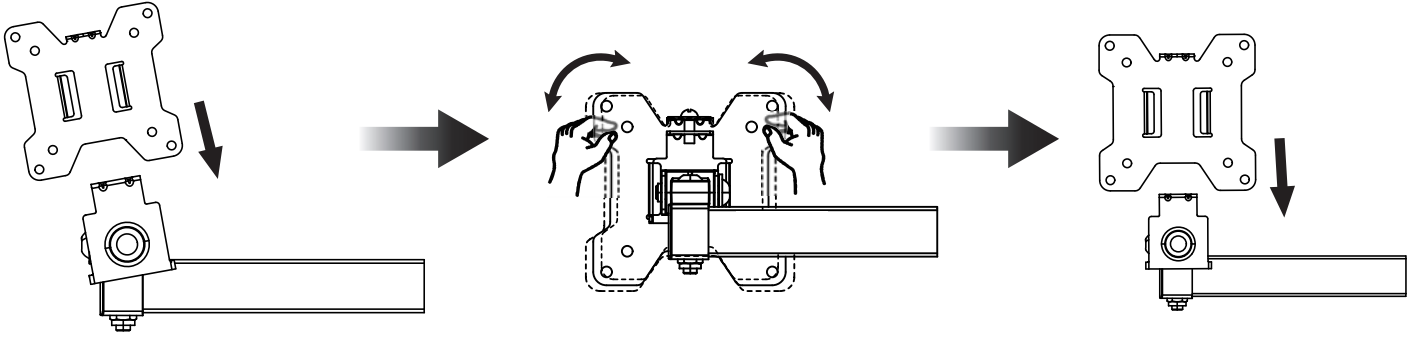
Étape 2 Fixer le bras pivotant à l'ensemble pilier

Grande clé Allen
1/4 po (6mm)

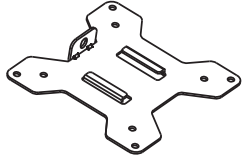


Faites glisser le pince à câble [12] sur l'ensemble pilier, puis positionnez le bras pivotant [11] sur l'ensemble pilier et fixez-le avec le boulon pré-assemblé à l'aide de la clé Allen [14] comme indiqué ci-dessous. Fixez les pince à câble [13] au bras pivotant [11].

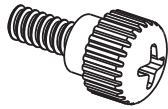
Avant de commencer l'étape 3, assurez-vous que la tête du bras pivotant [11] est verticale en faisant glisser la plaque de moniteur [15] et en l'ajustant jusqu'à ce qu'elle soit verticale.



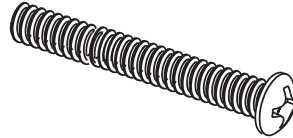
Pièces et matériel fournis pour l'étape 3



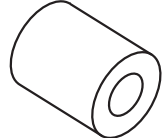
Plaque de moniteur
15 x 1



Boulon à ailettes M4 x 12
E x 4



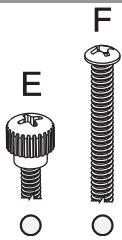
M4 x 30 Boulon
F x 4



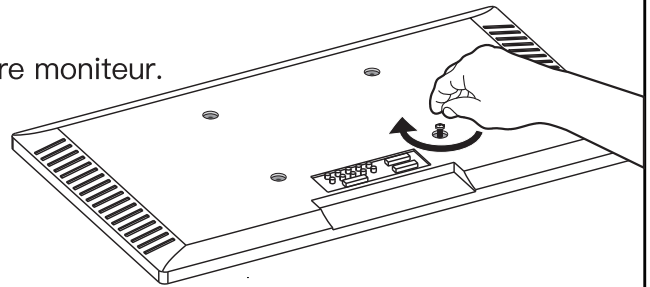
M4 Entretoises
G x 4

Étape 3 Attacher la plaque de moniteur

Sélectionner les boulons de moniteur

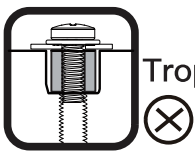


Une seule taille de boulon convient à votre moniteur.

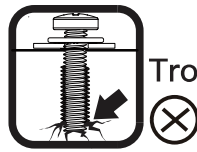


Longueur de la vis : vérifiez que le filetage est correctement engagé avec les boulons ou la combinaison vis / entretoises. Nous recommandons un engagement du filetage sur au moins 5 tours.

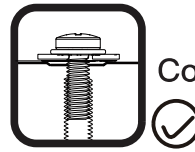
- Trop court, le TV ne sera pas maintenu.
- Trop long, le TV sera endommagé.



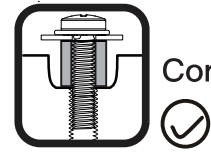
Trop court



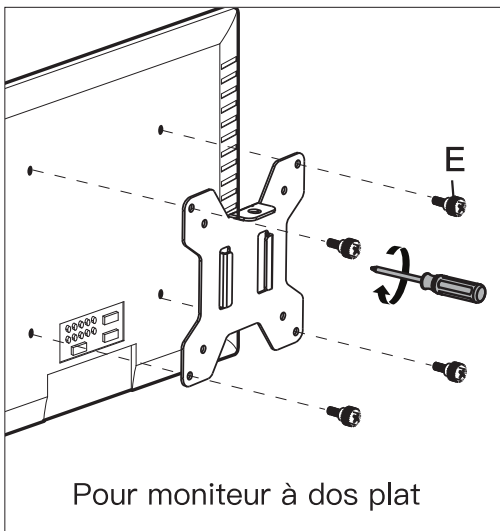
Trop long



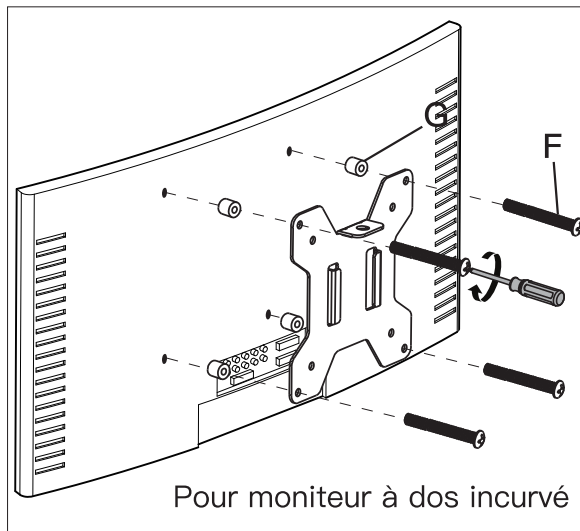
Correct



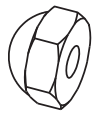
Correct



Or

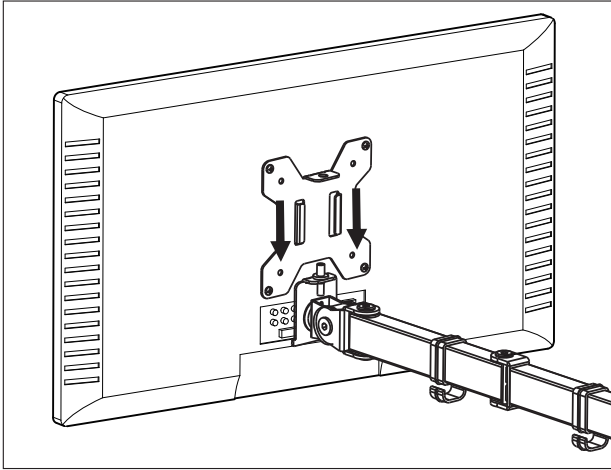


Matériel fourni pour l'étape 4

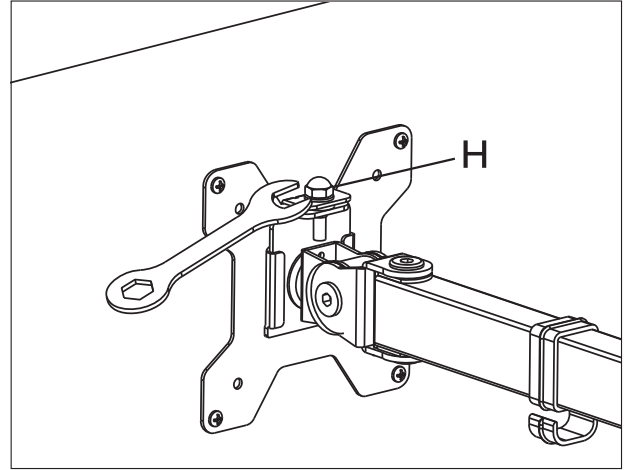


Écrou
H x 1

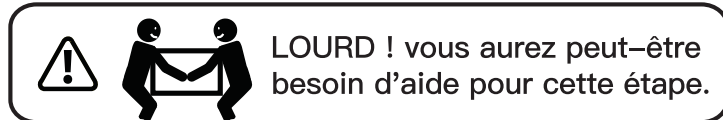
Étape 4 Fixer le moniteur à la tête du bras pivotant



Faites glisser le moniteur sur la tête du bras pivotant [11] comme indiqué sur le schéma ci-dessus.



Installez l'écrou de sécurité [H]. Assurez-vous que l'écrou de sécurité [H] est installé avant de faire pivoter le moniteur.

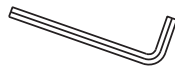


LOURD ! vous aurez peut-être besoin d'aide pour cette étape.



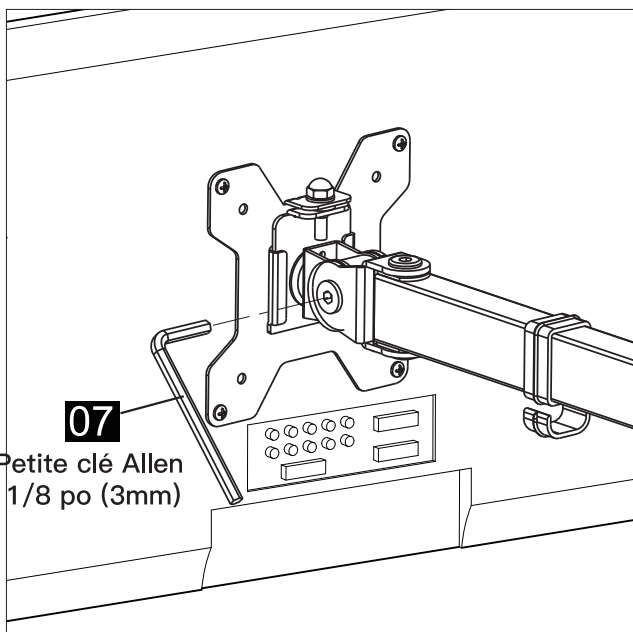
3/8 po (10mm) Clé
[non inclus]

Matériel fourni pour l'étape 5



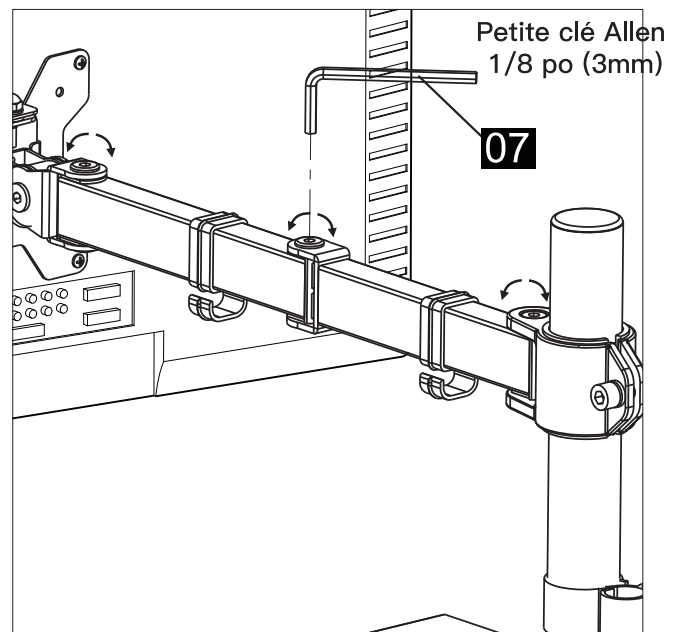
Petite clé Allen
1/8 po (3mm)
07 x 1

Étape 5 Réglages d'inclinaison et de pivotement du moniteur



07
Petite clé Allen
1/8 po (3mm)

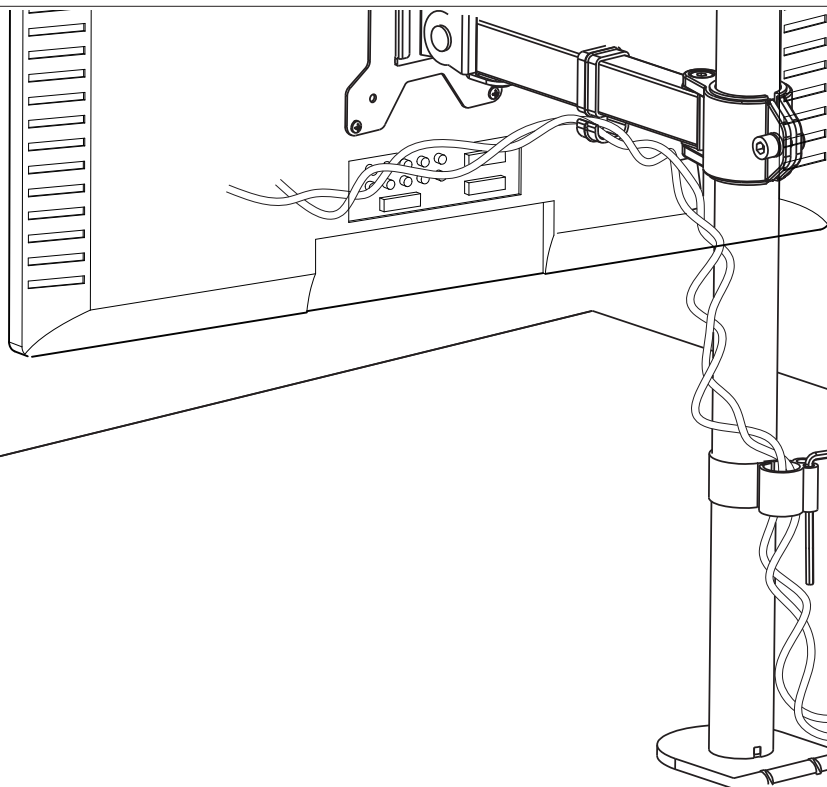
Desserrez le boulon, réglez le moniteur à l'angle souhaité et serrez le boulon avec la clé Allen [07].



Petite clé Allen
1/8 po (3mm)
07

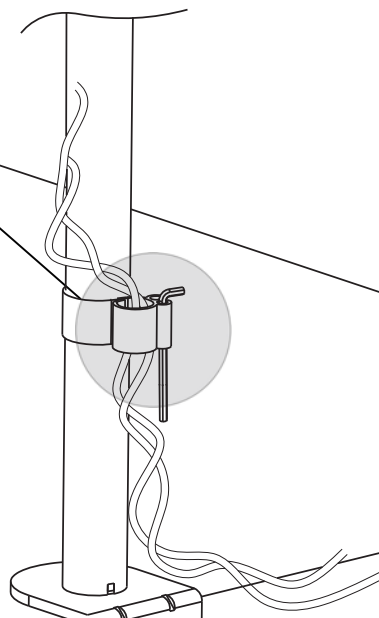
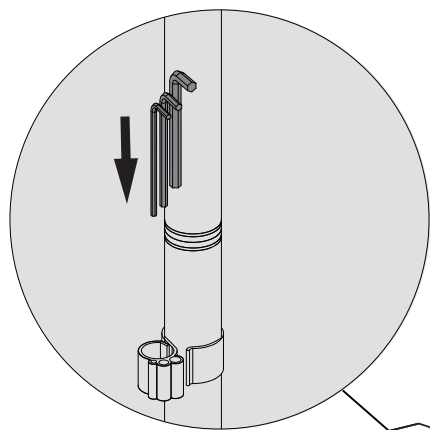
Desserrez les boulons, ajustez le bras pivotant [11] à la position souhaitée et serrez le boulon avec la clé Allen [07].

Étape 6 Gestion des câbles



Faites passer les câbles par les pince à câble [12] et [13] comme indiqué ci-dessous.

Étape 7 Rangement des clés Allen



INFORMACIÓN IMPORTANTE DE SEGURIDAD

• Lea todas las instrucciones detenidamente antes de proceder a la instalación. Si no entiende las instrucciones o tiene alguna duda o consulta, póngase en contacto con nuestra línea de asistencia técnica llamando al (877) 419-7832, o escribiendo al servicio de atención al cliente en Support@ergoav.com.

⚠ **PRECAUCIÓN:** ¡Evite posibles lesiones y daños materiales!

- No utilice este producto con ningún fin que no sea el especificado explícitamente en este manual. No supere la capacidad de peso. No nos hacemos responsables de posibles daños o lesiones causados por un montaje incorrecto, errores de ensamblaje o uso inadecuado.
- No use este producto en escritorios fabricados con tableros de aglomerado u otras maderas suaves.
- La información contenida en este manual no cubre todas las condiciones o variables posibles en relación con la instalación de este producto.

Límites de peso



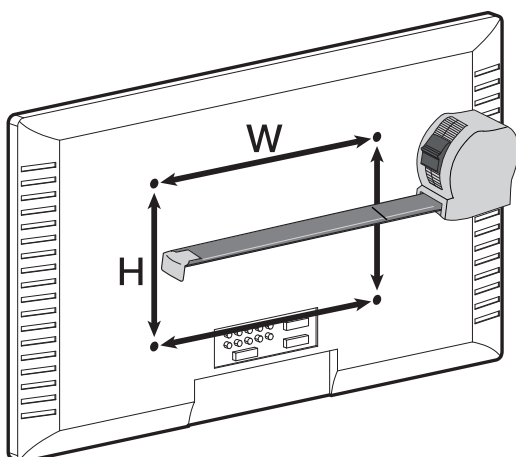
Si su monitor pesa más, este soporte NO es compatible. El monitor no debe exceder el peso máximo que se enumera.

⚠ ADVERTENCIA

NO exceda el límite máximo indicado de peso. Solo se puede utilizar este sistema de soporte si se no se sobrepasa los pesos máximos indicados. Si se utiliza con productos que sobrepasan los pesos máximos indicados es posible que el soporte y sus accesorios tengan fallas, y provoquen daños y/o lesiones.

Queda a responsabilidad del instalador verificar el peso total de los monitores y de cualquier accesorio acoplado. No se debe exceder del límite de peso establecido. No se debe exceder del límite de peso establecido.

Compruebe el patrón VESA de su monitor antes de realizar la instalación



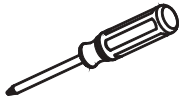
75mm ≈ 3 pulg
100mm ≈ 4 pulg

Mida el patrón VESA de su monitor:

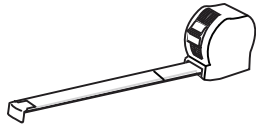
Mínimo: 75mm x 75mm / 3 pulg x 3 pulg (ancho x alto)
Máximo: 100mm x 100mm / 4 pulg x 4 pulg (ancho x alto)

Si el patrón VESA de su monitor mide menos de 75 mm x 75 mm o es más grande que 100 mm x 100 mm, este soporte NO ES COMPATIBLE con su monitor. Contáctese con nuestro soporte técnico al (877) 419-7832 o en support@ergoav.com para encontrar un montaje compatible.

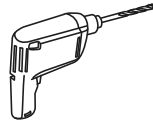
Herramientas necesarias (no incluidas)



Destornillador
Phillips



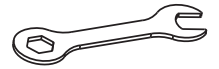
Cinta métrica



Taladro
(Opcional)



Broca para madera de
15/32 pulg - 3/4 pulg
(12mm - 20mm) (opcional)



3/8 pulg (10mm)
Llave inglesa

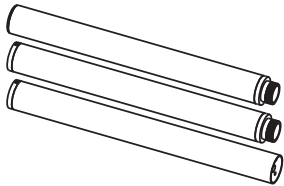
Piezas y herramientas provistas

⚠ ADVERTENCIA: Este producto contiene piezas pequeñas que pueden representar un riesgo de atragantamiento si se ingieren.

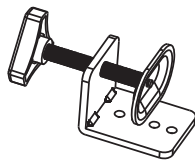
Antes de iniciar el montaje, compruebe que todas las piezas estén incluidas e intactas. No utilice piezas dañadas o defectuosas. Si necesita piezas de repuesto, póngase en contacto con nuestra línea de asistencia técnica al (877) 419-7832 o con el servicio de atención al cliente en support@ergoav.com

- Tenga en cuenta lo siguiente: Es posible que no necesite usar todos los herrajes incluidos en este envase.

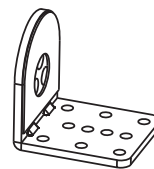
Piezas y herrajes suministrados para el paso 1



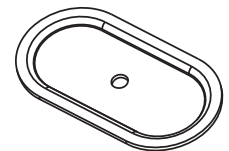
Pilar de soporte
01 x 1



Abrazadera en C
02 x 1



Abrazadera de
la sujeción C
03 x 1



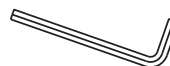
Placa de soporte
04 x 1



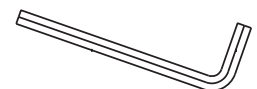
Base de ojal
05 x 1



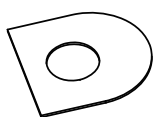
Llave Allen extra pequeña
5/64 pulg (2mm)
06 x 1



Llave Allen pequeña
1/8 pulg (3mm)
07 x 1



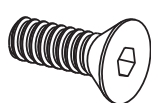
Llave Allen mediana
3/16" (5mm)
08 x 1



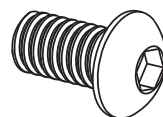
Almohadilla
blanda
09 x 1



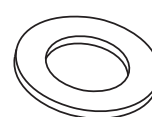
Almohadilla
blanda
10 x 1



M5x14
Pernos
A x 3



M8x12
Pernos
B x 2



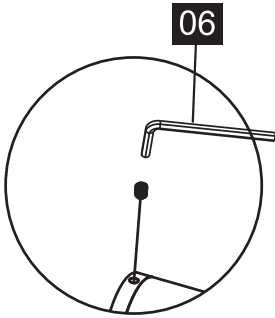
M10
arandelas
C x 1



Arandela
de resorte
D x 1

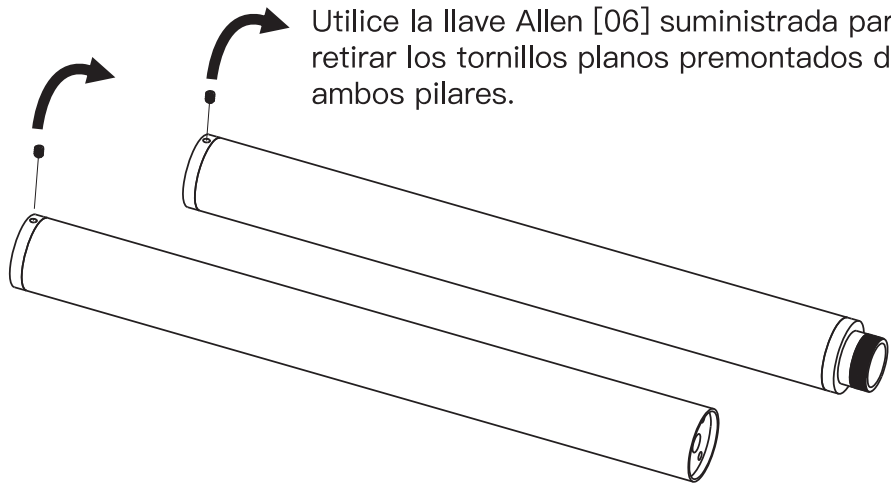
Conjunto del pilar de soporte

Llave Allen
extra pequeña
5/64 pulg (2mm)

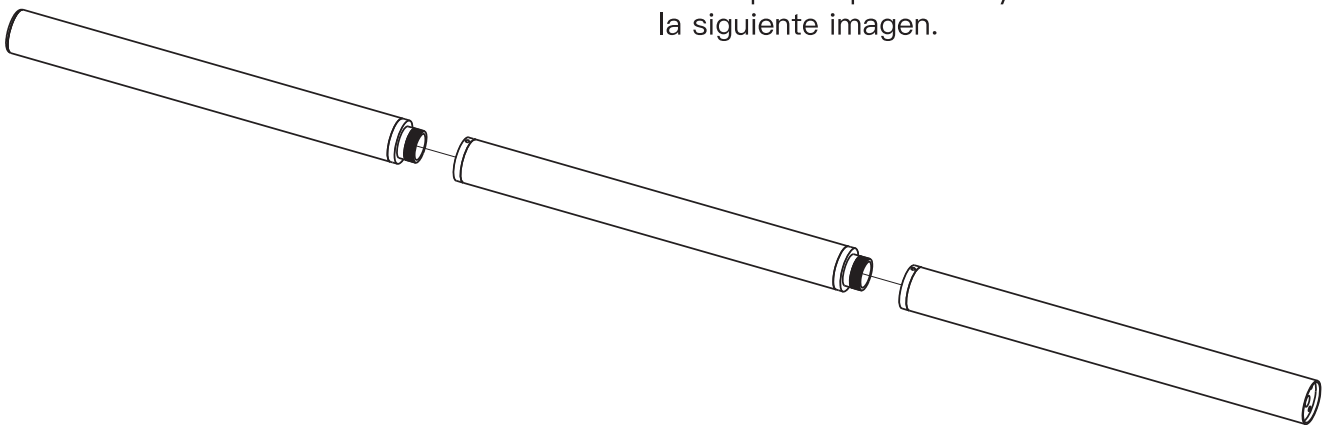


06

Utilice la llave Allen [06] suministrada para retirar los tornillos planos premontados de ambos pilares.



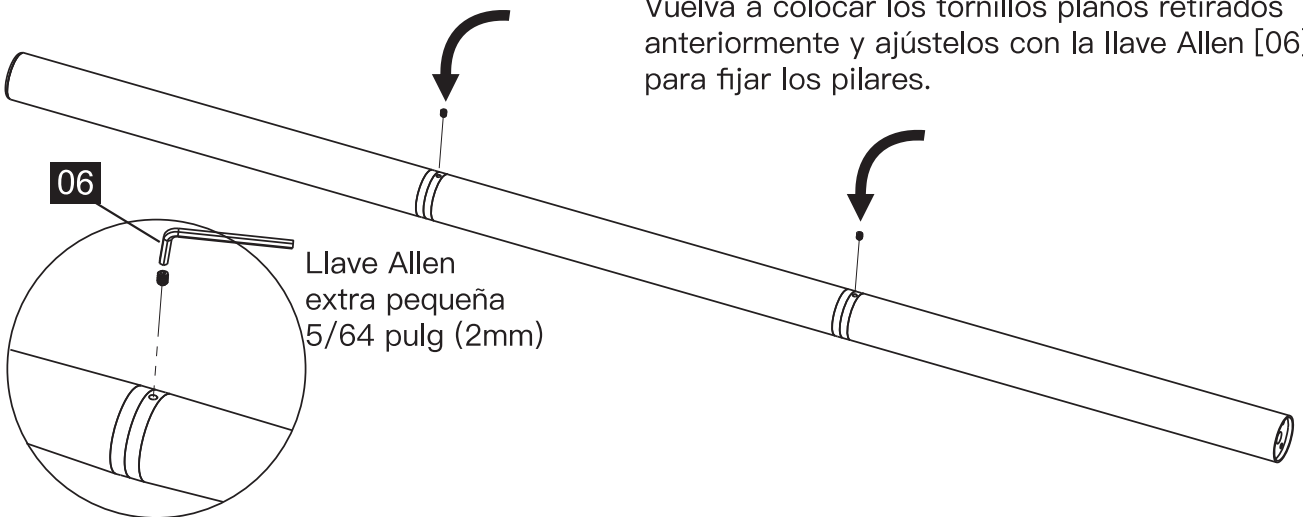
Enrosque los pilares tal y como se indica en la siguiente imagen.



Vuelva a colocar los tornillos planos retirados anteriormente y ajústelos con la llave Allen [06] para fijar los pilares.

06

Llave Allen
extra pequeña
5/64 pulg (2mm)



Paso1 Instalación del pilar de soporte

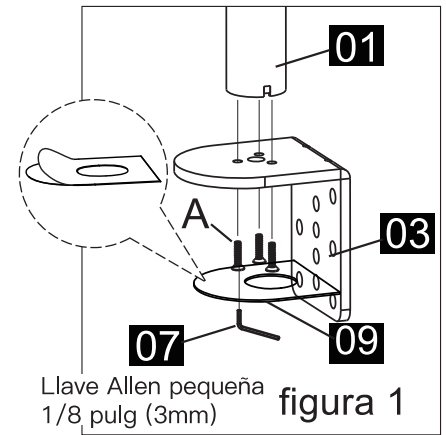
Opción A: Instalación de la abrazadera en C

1. Alinee los agujeros de la abrazadera de la sujeción C [03] con los agujeros del conjunto del pilar de soporte [01] y fíjelos con los tres pernos M5 x 14 [A] y la llave Allen [07]. A continuación, adhiera la almohadilla blanda [09] a la parte inferior de la abrazadera en C. Véase la figura 1.

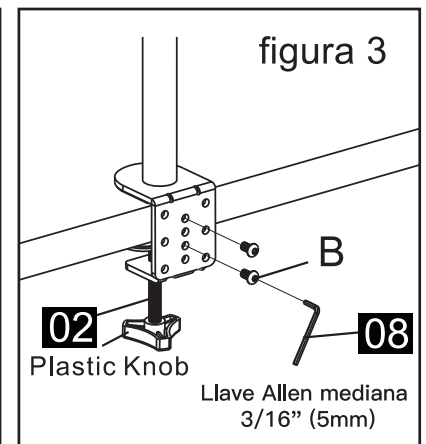
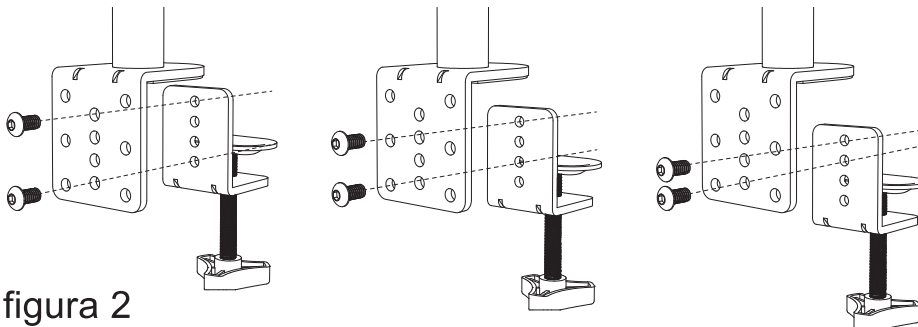
NOTA: La instalación de la abrazadera en C soportará un grosor de escritorio de entre 3/4 y 3 1/2 pulg. Consulte la figura 2 para ver la configuración correcta.

2. Fije la abrazadera en C [02] a la abrazadera en C [03] utilizando los dos pernos M8 x 12 [B] y la llave Allen [08]. Véase la figura 2.

3. Gire la perilla de plástico para fijar la abrazadera en C [02] al escritorio



- ❶ Para espesor de escritorio: 3/4 pulg – 2 3/8 pulg (20mm–60mm) ❷ Para espesor de escritorio: 1 3/8 pulg – 3 pulg (35mm–75mm) ❸ Para espesor de escritorio: 2 pulg – 3 1/2 pulg (50mm–90mm)



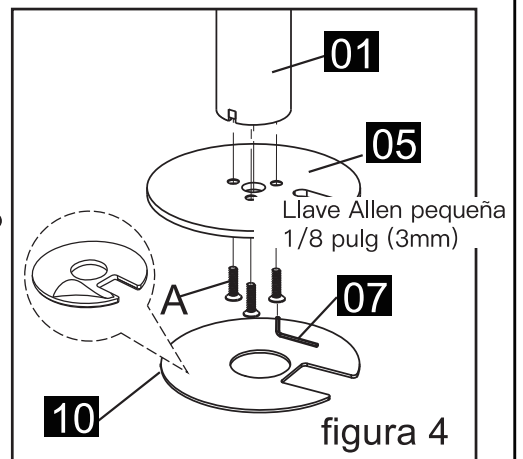
Opción B: Instalación del ojal

NOTA: Si su escritorio tiene un agujero de ojal existente con una cubierta de plástico, retírelo antes de realizar la instalación.

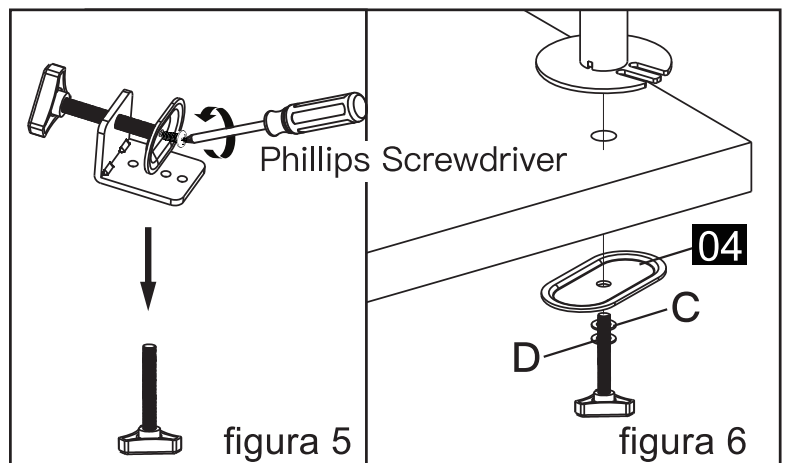
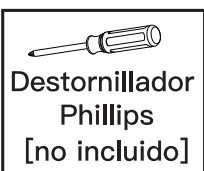
1. Alinee los agujeros de la base de ojal [05] con los agujeros del conjunto del pilar de soporte [01] y fíjelos con los tres pernos M5 x 14 [A] y la llave Allen [07]. A continuación, adhiera la almohadilla blanda [10] a la parte inferior de la base de ojal [05]. Véase la figura 4.

2. Retire el tornillo del conjunto de la abrazadera en C [02] con un destornillador Phillips. A continuación, retire la placa de la parte roscada de la perilla del conjunto de la abrazadera en C [02]. Véase la figura 5.

3. Coloque el poste sobre la superficie de montaje y fíjelo con la placa de soporte [04], la arandela M10 [C], la arandela de resorte [D] y el perno con la perilla de plástico fijado. Véase la figura 6.

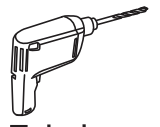


Para espesor de escritorio:
3/4 pulg – 3 1/2 pulg (20mm–90mm)



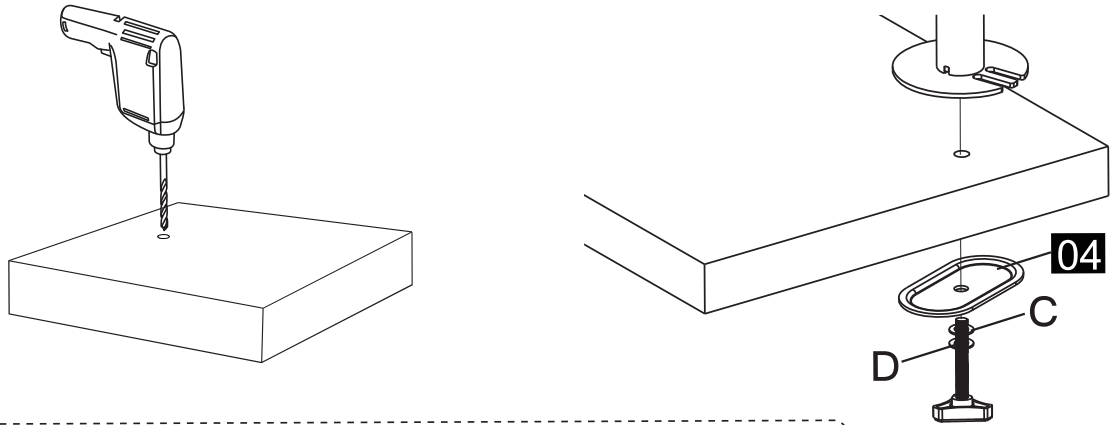
Opción C: Instalación del agujero de ojal auto perforado

1. Haga una marca para el agujero central en su superficie de montaje. Utilice una broca de 15/32 pulg (12mm) como mínimo y de 3/4 pulg (20mm) como máximo y perforo un agujero en la superficie de montaje. Véase la figura 7.



Taladro
[no incluido]

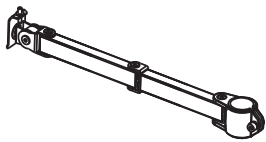
2. Vuelva a la opción B y siga los pasos.



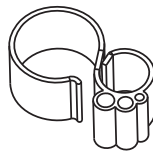
Para espesor de escritorio: 3/4 pulg – 3 1/2 pulg (20mm–90mm)

figura 7

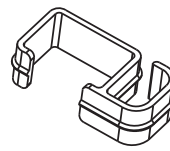
Piezas y accesorios suministrados para el paso 2



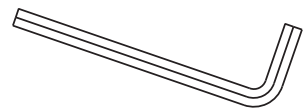
Brazo giratorio
11 x 1



Clip de cable
12 x 3



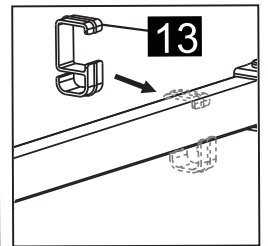
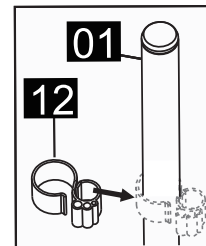
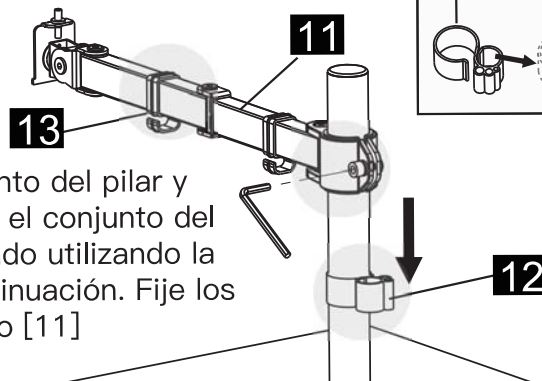
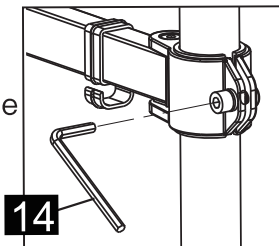
Clip de cable
13 x 2



Llave Allen grande
1/4 pulg (6mm)
14 x 1

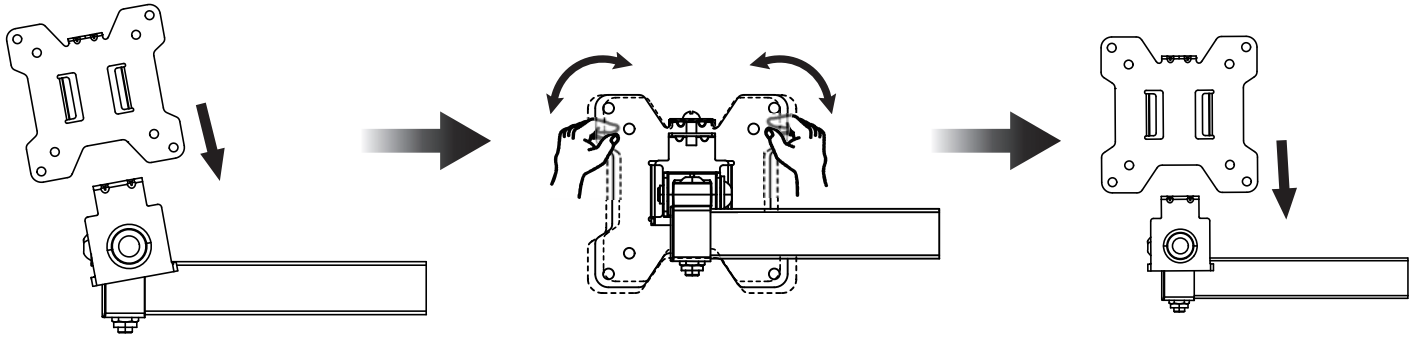
Paso 2 Coloque el brazo giratorio en el conjunto del pilar

Llave Allen grande
1/4 pulg (6mm)

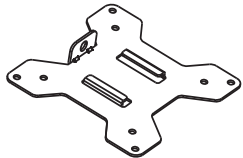


Deslice el clip de cable [12] en el conjunto del pilar y luego coloque el brazo giratorio [11] en el conjunto del pilar y asegúrelo con el perno premontado utilizando la llave Allen [14] como se muestra a continuación. Fije los clips de cable [13] con el brazo giratorio [11]

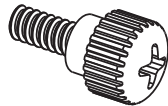
Antes de comenzar con el paso 3, asegúrese de que la cabeza del brazo giratorio [11] esté en posición vertical deslizando la placa de monitor [15] y ajustándola hasta que esté en posición vertical.



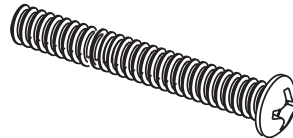
Partes y accesorios suministrados para el Paso 3



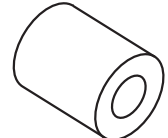
Placa de monitor
15 x 1



Perno de pulgar M4 x 12
E x 4



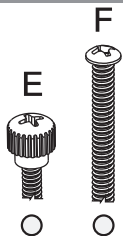
M4 x 30 Pernos
F x 4



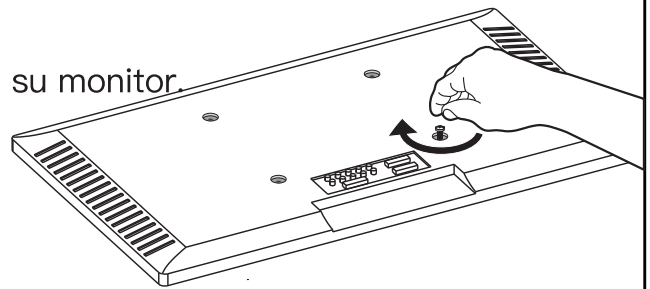
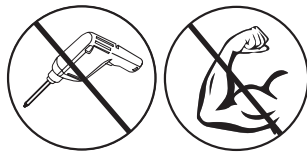
M4 Espaciadores
G x 4

Paso 3 Asegurar la placa de monitor

Seleccione los pernos del monitor



Sólo un tamaño de perno se ajusta a su monitor.



Longitud del tornillo: Compruebe que la rosca encaje correctamente con los tornillos o la las combinaciones de tornillo / espaciador. Se recomienda enganchar las roscas con 5 vueltas como mínimo.

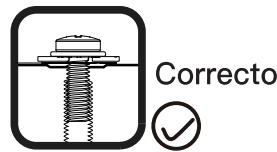
- Demasiado corto, no sostendrá el TV.
- Demasiado largo, dañará el TV.



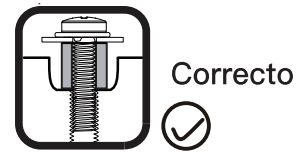
Demasiado corto



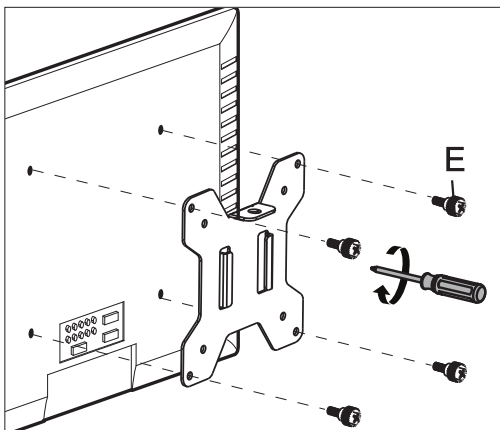
Demasiado largo



Correcto

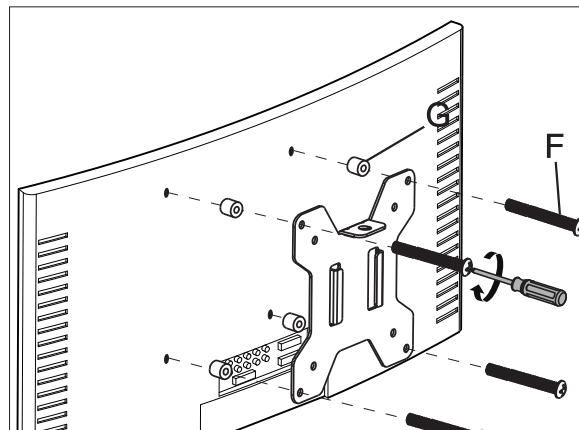


Correcto



Para monitor con respaldo plano

Or

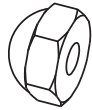


Para monitor con respaldo curvo



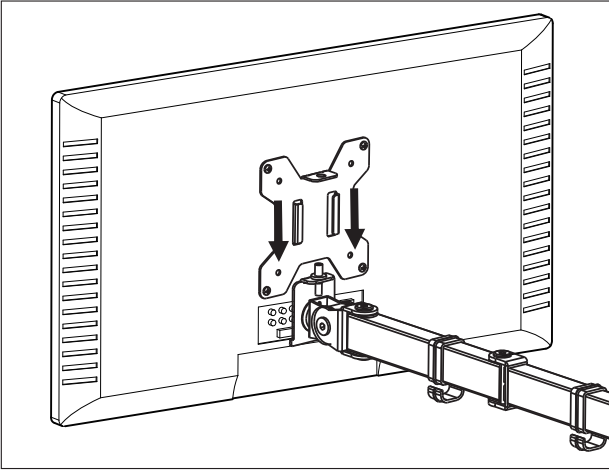
Destornillador
Phillips
[no incluido]

Accesorio suministrado para el Paso 4

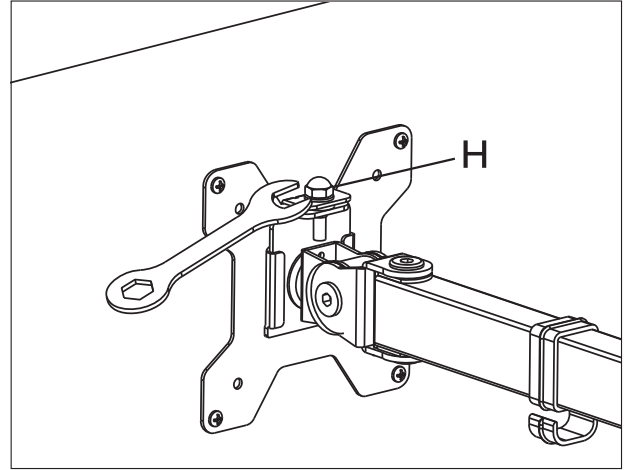


Tuerca
H x 1

Paso 4 Coloque el monitor en la cabeza del brazo giratorio



Deslice el monitor en la cabeza del brazo giratorio [11] tal y como se indica en el diagrama anterior.



Instale la tuerca de seguridad [H]. Asegúrese de que la tuerca de seguridad [H] esté instalada antes de girar el monitor.

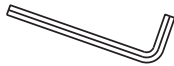


¡OBJETO PESADO! Es posible que necesite asistencia en este paso.



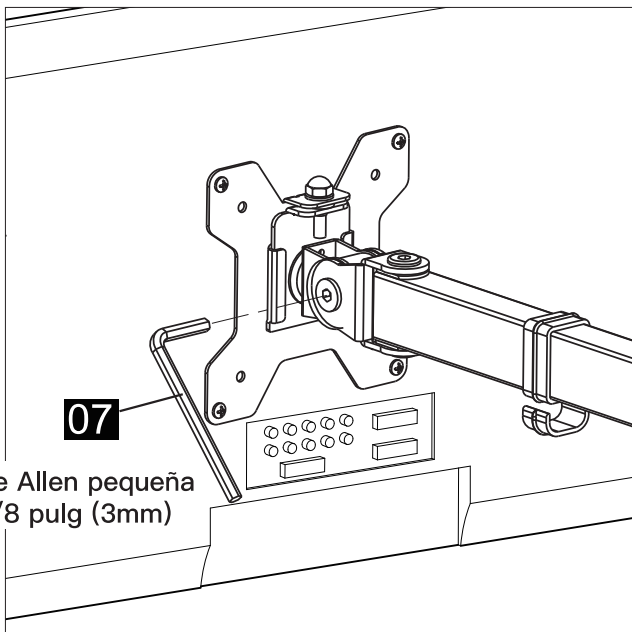
3/8 pulg (10mm) Llave inglesa
[no incluido]

Accesorio suministrado para el Paso 5



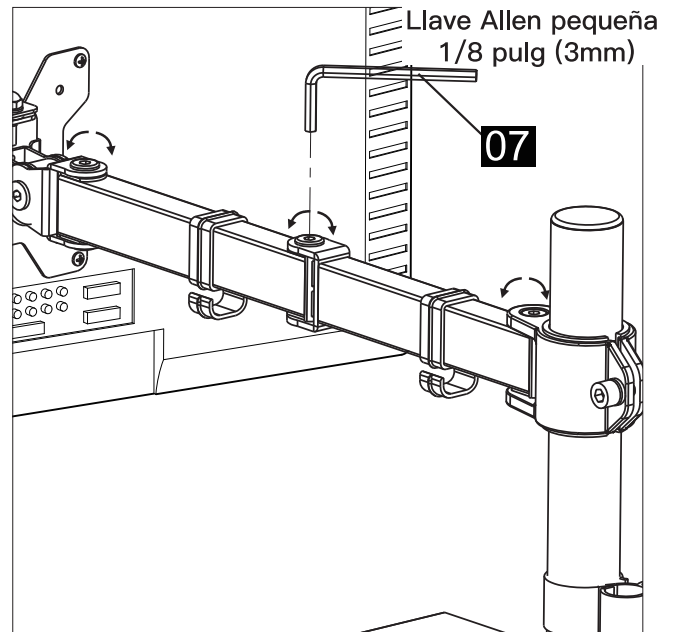
Llave Allen pequeña
1/8 pulg (3mm)
07 x 1

Paso 5 Ajustes de inclinación y giro del monitor



Llave Allen pequeña
1/8 pulg (3mm)

Afloje el perno, ajuste el monitor al ángulo deseado y apriete el perno con la llave Allen [07].

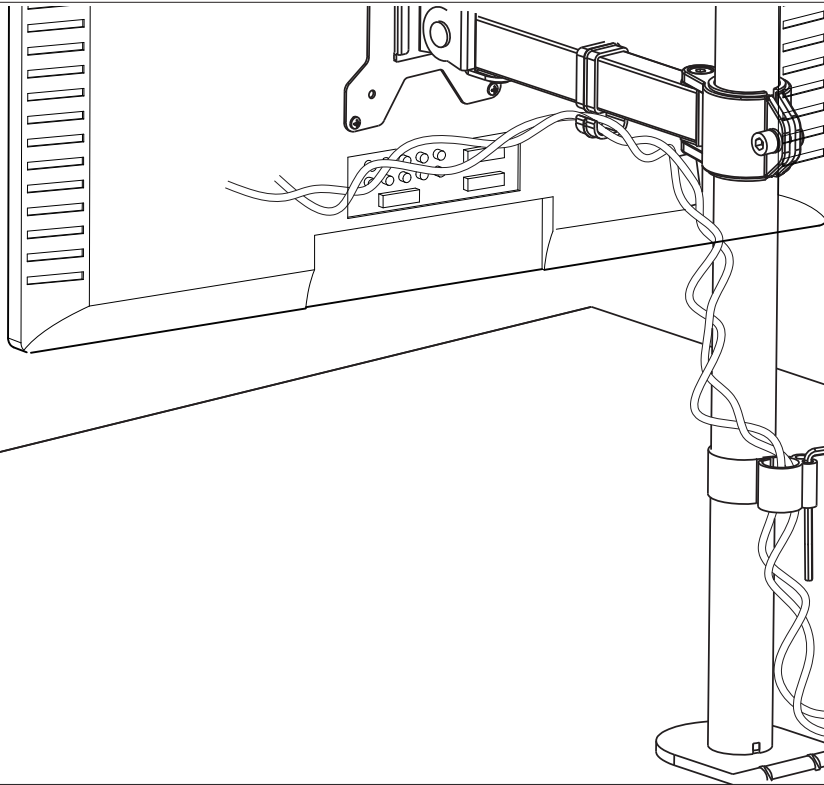


Llave Allen pequeña
1/8 pulg (3mm)

07

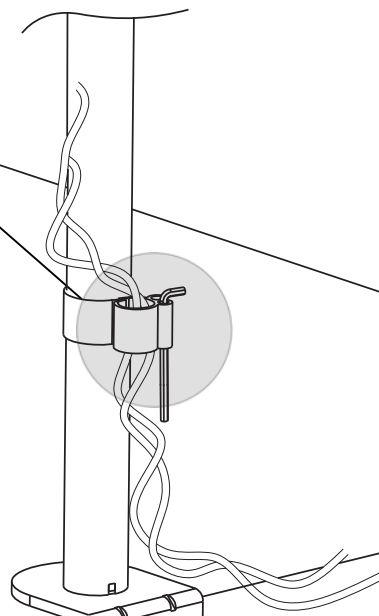
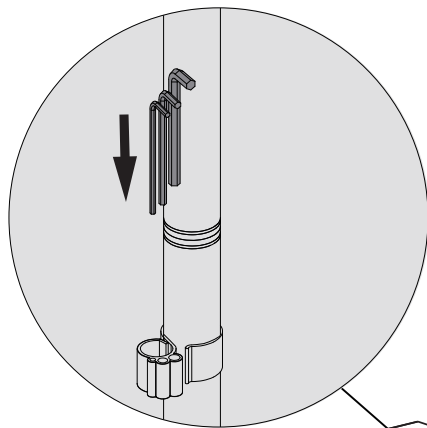
Afloje los pernos, ajuste el brazo giratorio [11] a la posición deseada y apriete el perno con la llave Allen [07].

Paso 6 Gestión de los cables



Pase los cables a través de los clips de cables [12] y [13] como se muestra a continuación.

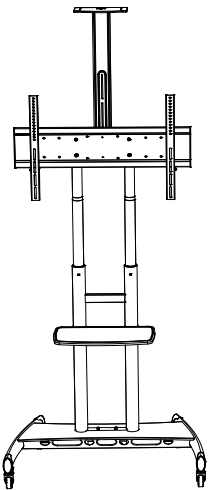
Paso 7 Guarde las Llaves Allen



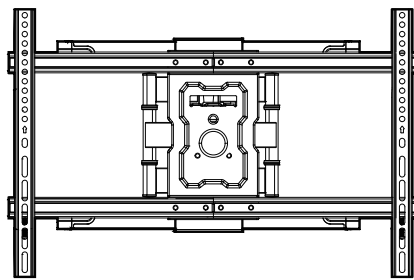


At ErgoAV, we strive to provide the highest value products.
We want to support your purchase.
If you have questions, concerns,
or feedback please let us know!

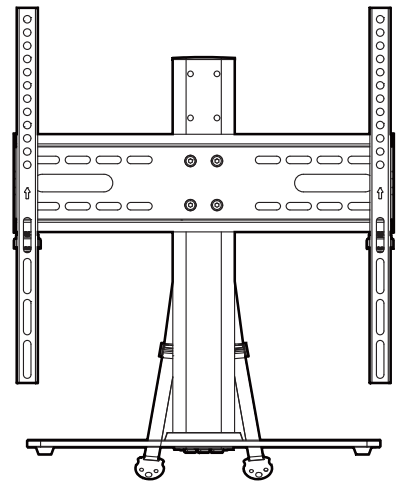
ErgoAV Customer Care
Phone (877) 419-7832
support@ergoav.com



TV Carts



TV Mounts



Tabletop TV Stands

9501 Louisiana Ave N, #200, Brooklyn Park, MN 55445
www.ergoav.com